

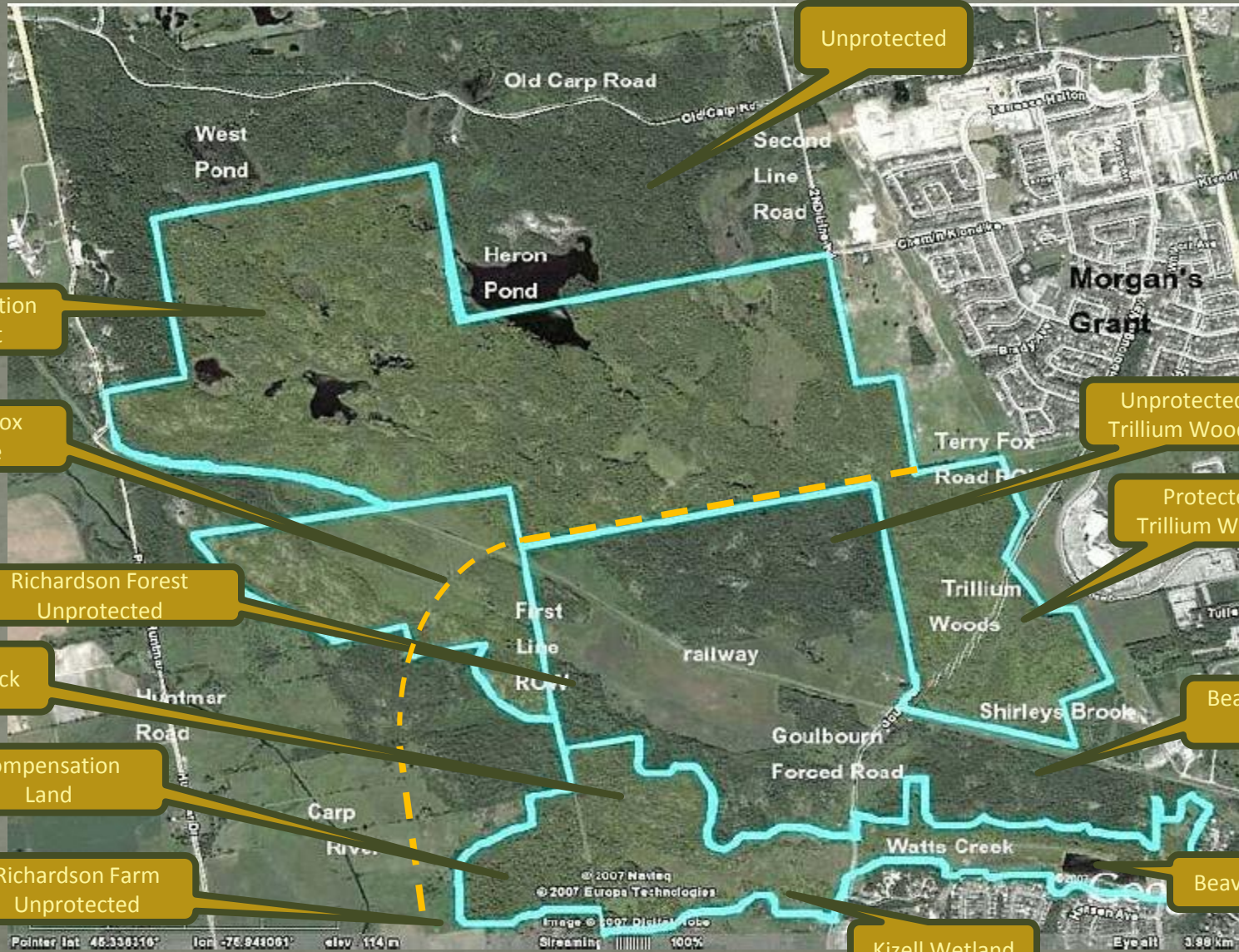


The Advocate For For Ottawa's Great Forest

South March Highlands – Carp River Conservation Inc.

[All photos in this presentation were taken in or of the South March Highlands]

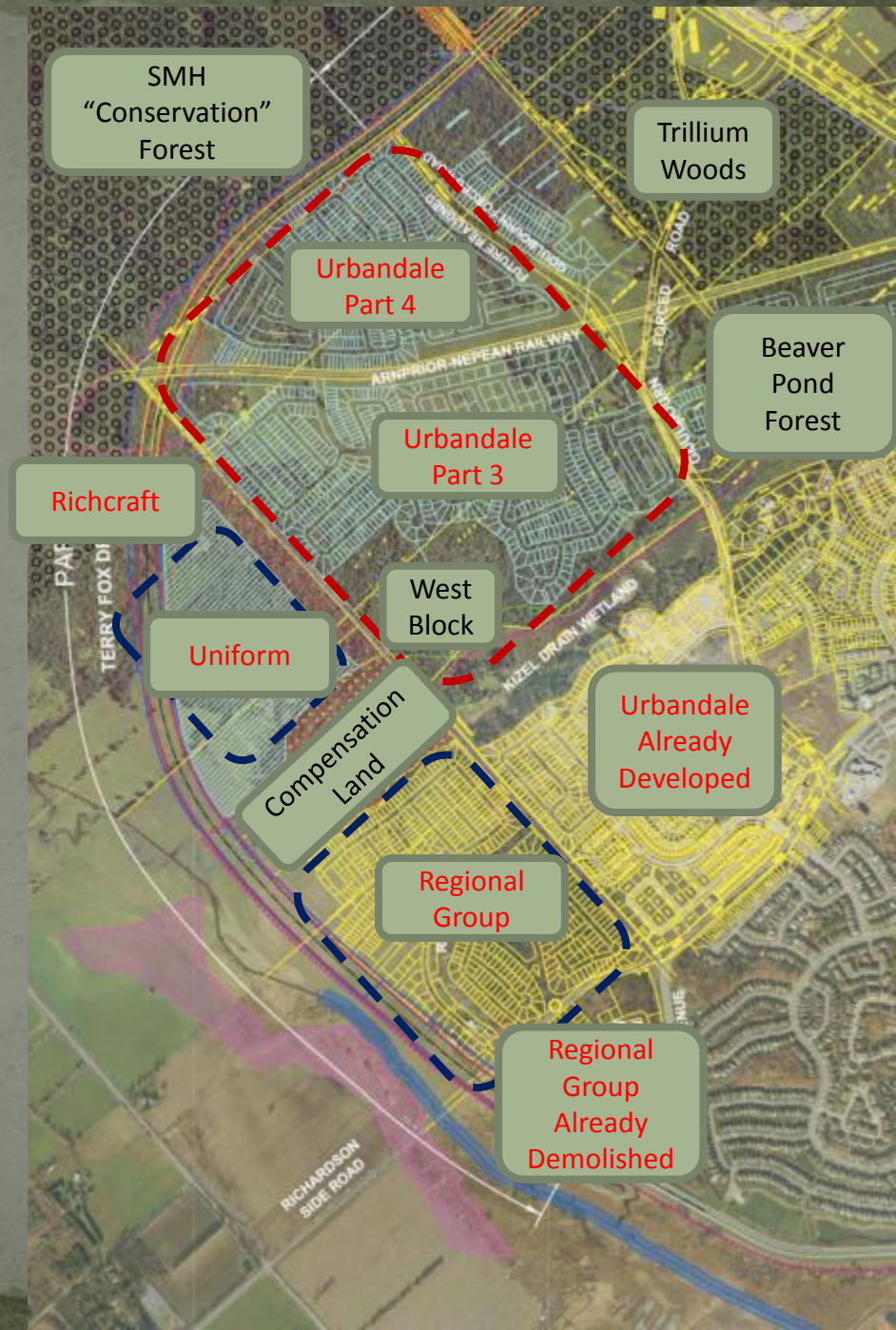
South March Highlands



Areas shown in Blue are City of Ottawa owned

Why Advocacy Is Still Needed

- **Kizell Wetland / Beaver Pond**
 - No Environmental Assessment for SWM use
 - No pollution control for existing storm sewers
 - Incomplete PSW Evaluation
 - Storm Sewer usage conflicts with UNF designation
 - Flood levels already exceeded by current use
- **Urbandale Development**
 - Subdivision Plan based on diversion of water from Shirley's Brook to Kizell Wetland
 - Not permitted by Sub-watershed Plan
 - Will devastate unprotected portion of Trillium Woods
- **Regional Group Development**
 - Plan to put SWM Facility in Carp River Floodplain
 - Cannot function during floods unless West Block is converted into a Storm Sewer Pond and Carp River flood levels are increased by removal of floodplain
- **Richcraft Future Development**
 - Has requested rezoning Environmentally Protected land to General Rural
 - Wants to extend the Urban Boundary further west and north to encroach on Conservation Forest
 - Auditor General has shown negative Net Present Value



Advocacy To-Date: Beaver Pond Forest

- Organized opposition to development of the forest
 - Prevented clear-cutting that could have occurred in July
 - Influenced City's decision to conduct Environmental Assessment for water diversion
 - Influenced decision to re-evaluate Kizell as a Provincially Significant Wetland
- Conceived the Stewardship Plan as an alternative development proposal
- Represented the forest at City Council Committees
 - Agricultural and Rural Affairs Committee
 - Planning and Environment Committee
 - Forest & Greenspace Advisory Committee
 - Environmental Advisory Committee
 - Cultural Heritage Advisory Committee
 - Influenced passing of 4 council decisions



Advocacy To-Date: Greenbelt Expansion

- Obtained participant status within NCC Master Planning Process
 - Worked with Greenbelt Coalition to propose Emerald Necklace that incorporates the SMH into the Greenbelt
 - Met with NCC to educate & generate internal support
- Greenbelt expansion to include the SMH
 - 1 of 3 options emerging from the Master Planning process



The Emerald Necklace: 11 Eco-Corridors Linking 7 Eco-Reservoirs



Advocacy To-Date: TFDE

- No mitigation of impact of TFDE on eco-connectivity
 - City admits TFDE severs eco-connectivity
 - City eliminated large eco-passage without public review
 - Scientific evidence shows that existing tunnels will not work
- Filed for judicial review of environmental assessment (EA) process
 - Did NOT request that road be removed
 - Requested that proper EA be completed - decision pending
 - Intend to pursue the EA process to ensure that proper mitigation occurs
- Pre-decision legal action influenced City to-date:
 - Abandon major diversion of Shirley's Brook
 - Conduct EA for planned diversion of water
 - Initiate first-ever population study for Blanding's turtle



Advocacy To-Date: Carp River Corridor

- Kanata West Subdivision
 - Filed Part II Order Request with Ministry of Environment
 - EA completion by staff without approval of City Council
 - Questionable flood plain model results showing negative flow
 - Concern over human safety due to predicted increase in flood level and in flood flow rate due to lack of storm water flow management
- Richardson Ridge Subdivision
 - Filed OMB appeal over rezoning of flood plain for a storm water management pond
 - Concern for human safety due to inability of SWM facility to function during a flood – increases flood levels and flow rate
 - This appeal is currently in-progress



Terry Fox Dr
July 24, 2009

Open Questions - Provincial

- Why is there no Provincial support for Stewardship Plan?
 - Economic benefits increase provincial tax revenues
 - Enhances Ontario as an eco-tourism destination
 - Reduces bussing costs for Ontario schools and improves quality of education
 - Helps Ontario meet Kyoto Commitments on Climate Change
 - Protects 19 Species-At-Risk
- Why is there no Provincial support for Aboriginal Cultural Heritage?
 - SMH have the only Paleo-Indian sites in Eastern Ontario
 - Meets standard for Provincially Significant Cultural Heritage
- Why is there no final Provincial recognition of SMH as an Area of Natural & Scientific Interest?
 - Candidate Life Science ANSI has languished for over 5 years
 - No ANSI evaluation ever done for Physical Science
- Why does the Province continue to allow piece meal Storm Water management in an area prone to flooding?



Open Questions - Federal

- Why is there no Federal support for Stewardship Plan?
 - SMH is less than 30 minutes from Parliament Hill
 - Economic benefits of Stewardship Plan increase federal tax revenues and create jobs
 - Stewardship Plan enhances the prestige of the National Capital Region
 - Helps Canada meet international commitments on bio-diversity
- Why is Federal Government ignoring Aboriginal Issues?
 - Unresolved land claim by Algonquin First Nation who claim that the SMH is an ancient and sacred site for indigenous people
 - No assistance provided to City in evaluating or protecting 10,000 year old cultural heritage sites
- NCC Master Plan may take 2 years to conclude
 - NCC Greenbelt expansion lacks funding and priority
 - Need to pass Bill C-20 to provide official status for Greenbelt

