

# Protecting The South March Highlands



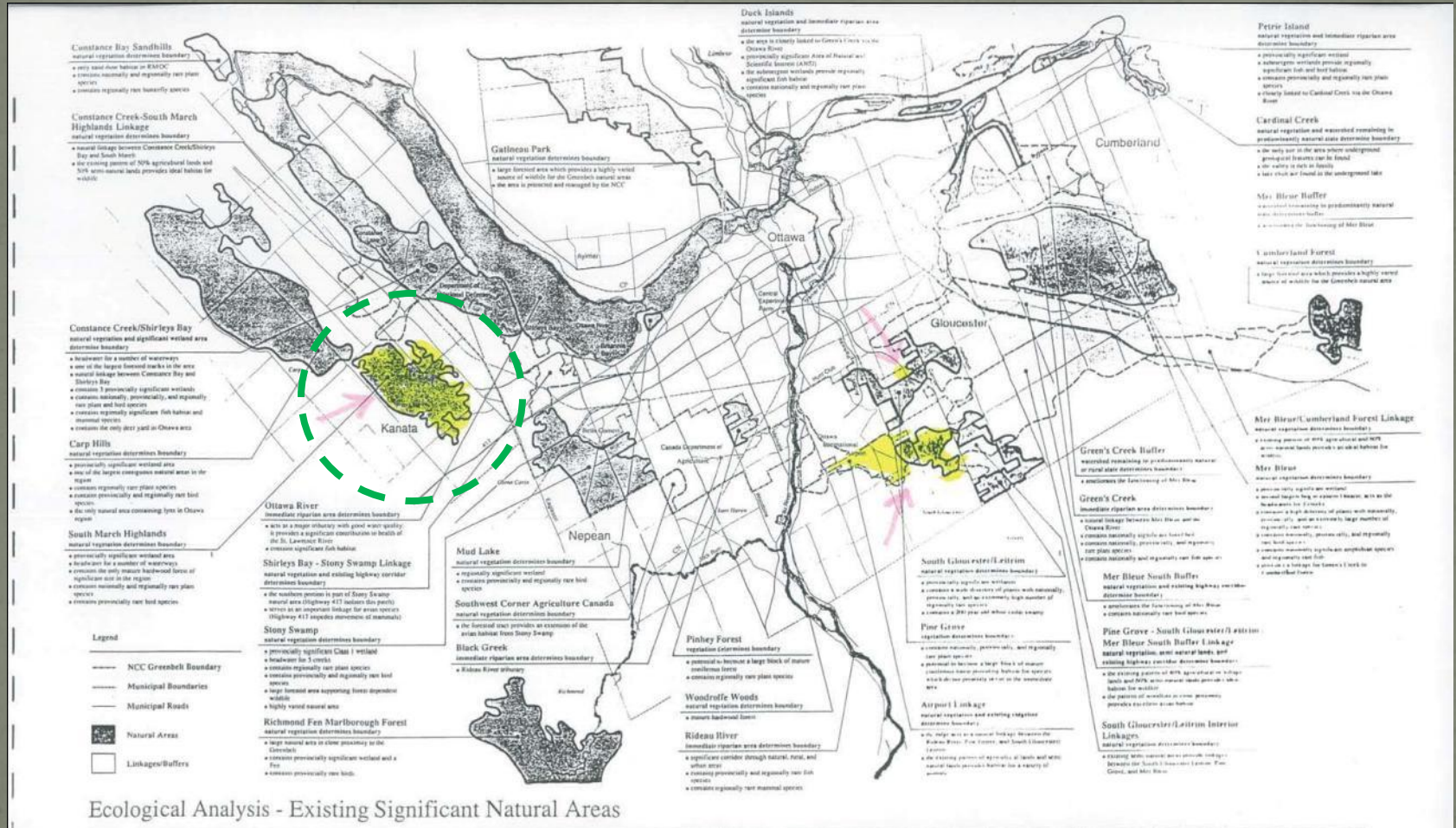
Greenbelt Coalition  
Coalition To Protect South March Highlands

*All photos in this presentation were taken in or of the South March Highlands*

# National Capital's 3 Major Eco-Corridors



# SMH Already Identified As NLM-Quality



Ecological Analysis - Existing Significant Natural Areas

## NCC Ecological Analysis of the Greenbelt [1991]

# A Wild Island Inside Ottawa

(3x Larger Than Stanley Park)  
Unique in the World



Old Growth Trees  
> 100 Years Old

30 Eco-Types  
Of Vegetation

10 Distinct  
Habitats

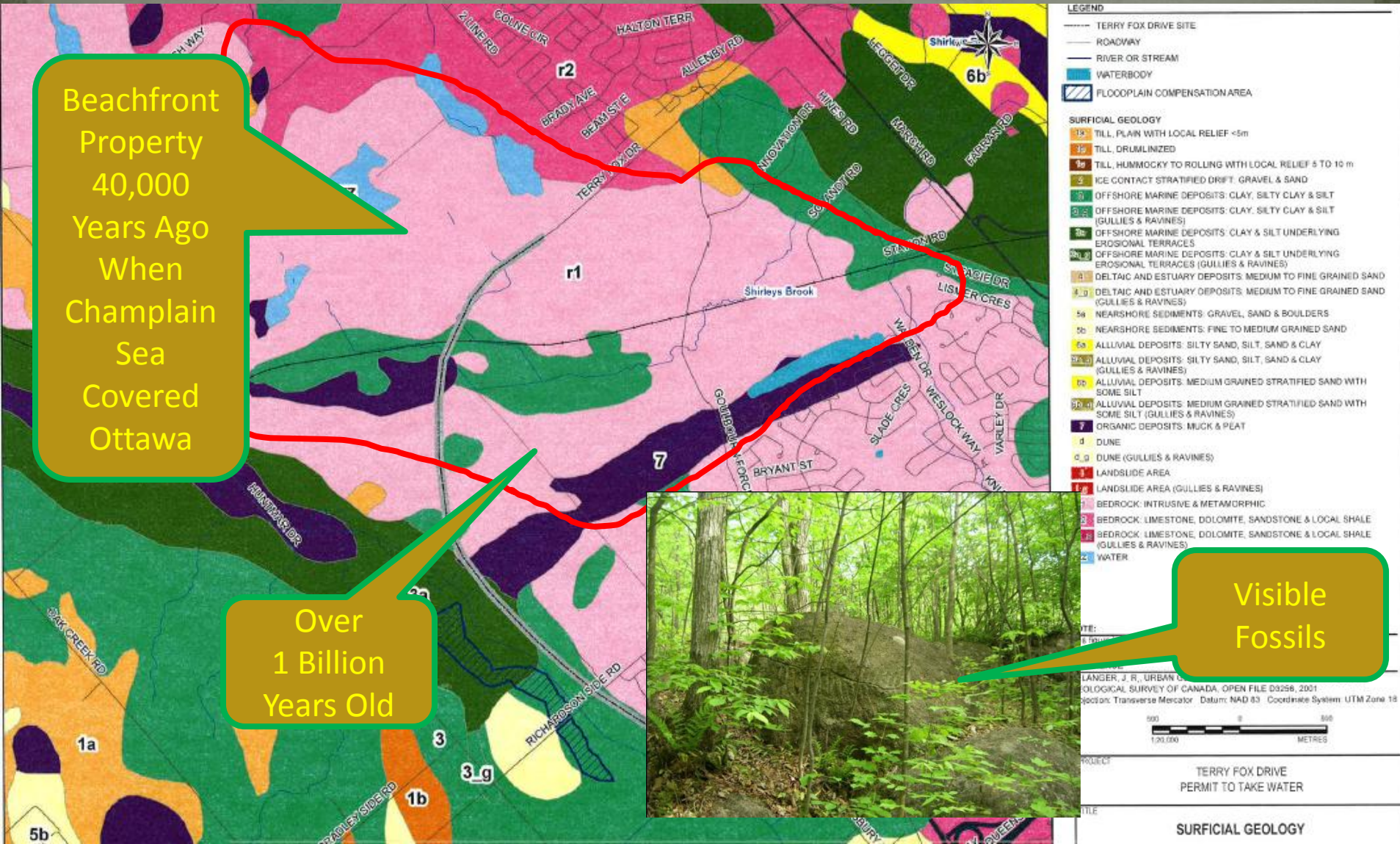
Visible Canadian  
Shield

# Visible Pre-Cambrian Shield

Beachfront Property  
40,000 Years Ago  
When Champlain Sea  
Covered Ottawa

Over  
1 Billion  
Years Old

Visible  
Fossils



# A Distinctive Setting



# Ponds, Meadows & Forests



*“Trillium Woods, which is like a chunk of the Gatineaus in the urban landscape of Ottawa, with rich plant and animal life found nowhere else in the urban part of the City”*

Ottawa Urban Natural Areas Environmental Evaluation  
[Muncaster & Brunton, 2008]

# Integral to Shirley's Bay Hydrology

SMH  
Integral  
To  
Greenbelt  
Water  
Quality

Shirley's  
Brook

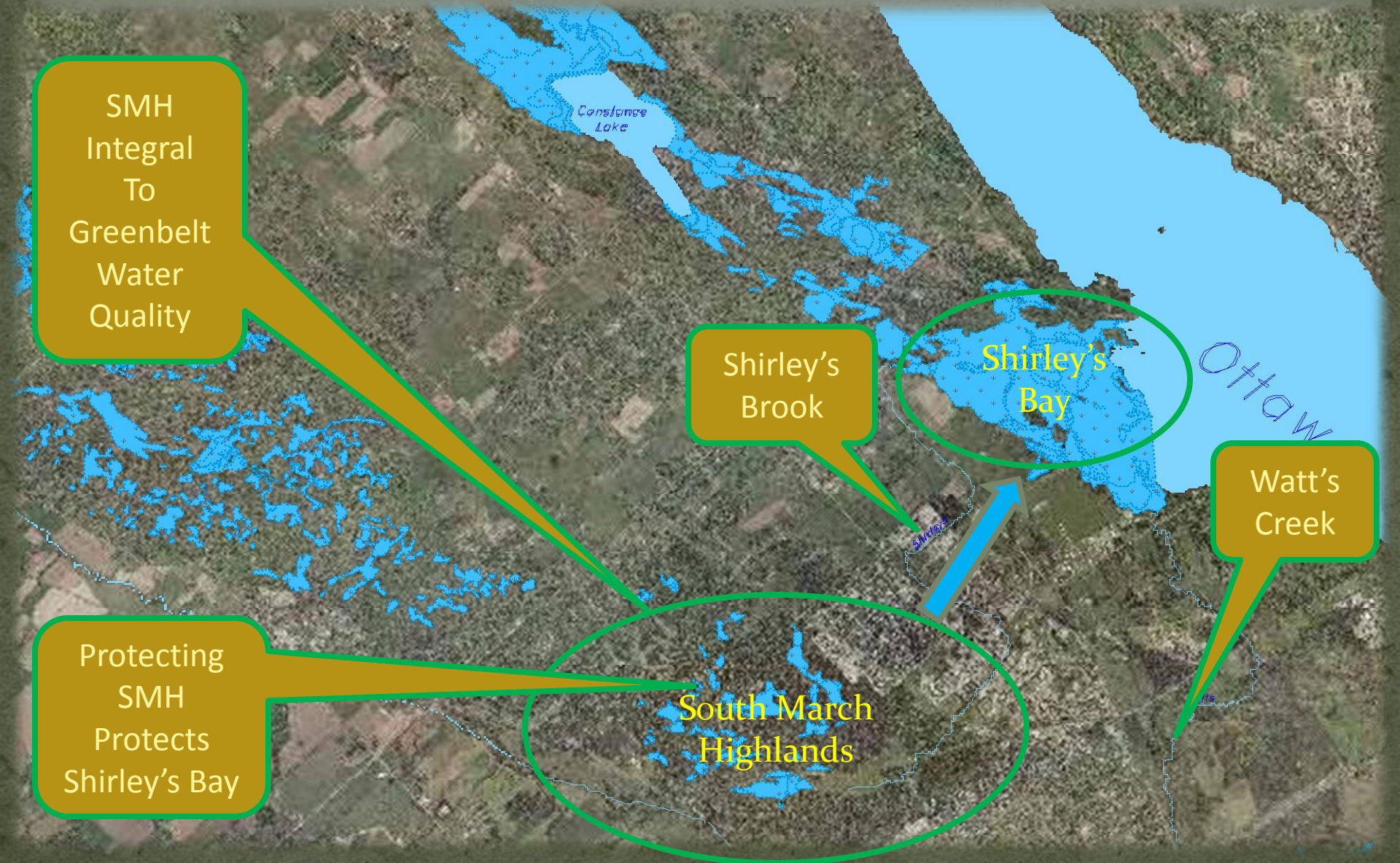
Shirley's  
Bay

Watt's  
Creek

Protecting  
SMH  
Protects  
Shirley's Bay

South March  
Highlands

Ottawa

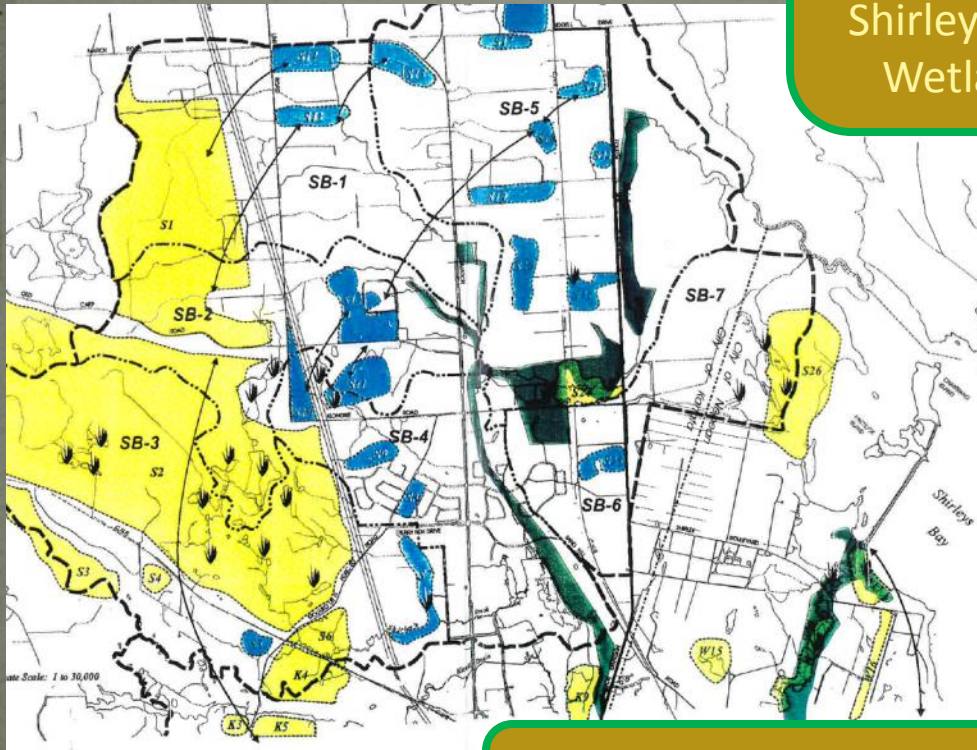




# Wildlife Corridors in Shirley's Brook Subwatershed

Source: Shirley's Brook / Watt's Creek Subwatershed Study, 1999

SMH Has Natural Eco-Connection To Shirley's Bay Wetlands



Fish of Special Concern (Bridle Shiner)

# *“Densest Bio-Diversity In Ottawa”*

[Brunton, 2008]

Over 679 Species:  
440 Native Plants  
164 Avian  
75 Mammals, Fish,  
Amphibians, Reptiles

Unknown Number of  
Insect & Bryophyte  
Species

All Within an  
Area of 3 x 4 km



# Provincially Significant Life Science Area

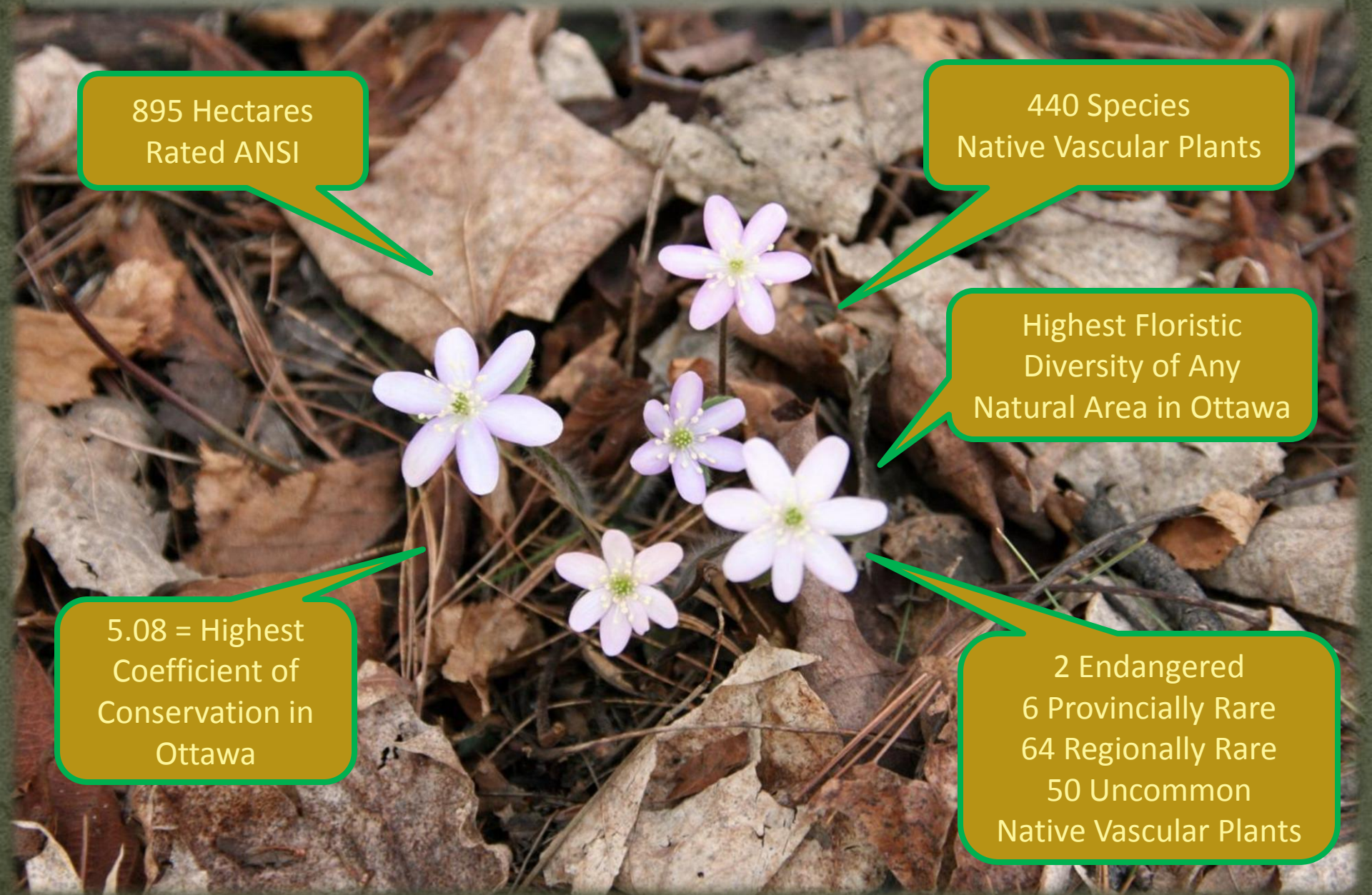
895 Hectares  
Rated ANSI

440 Species  
Native Vascular Plants

Highest Floristic  
Diversity of Any  
Natural Area in Ottawa

5.08 = Highest  
Coefficient of  
Conservation in  
Ottawa

2 Endangered  
6 Provincially Rare  
64 Regionally Rare  
50 Uncommon  
Native Vascular Plants



# + Provincially Significant Wetland Complex

114 Hectares  
Rated ANSI

164 Avian Species  
Observed

1 Endangered  
3 Threatened  
5 Special Concern  
30 Regionally Rare  
Avian Species

136 Species of  
Nesting Birds



# + Undocumented Number of Vernal Pools

Over 26 identified species of  
Herpetofauna

3 Threatened Species  
2 Special Concern

Insect of Special Concern  
(Monarch Butterfly)



# 18 Known Species At Risk

## Endangered or Threatened

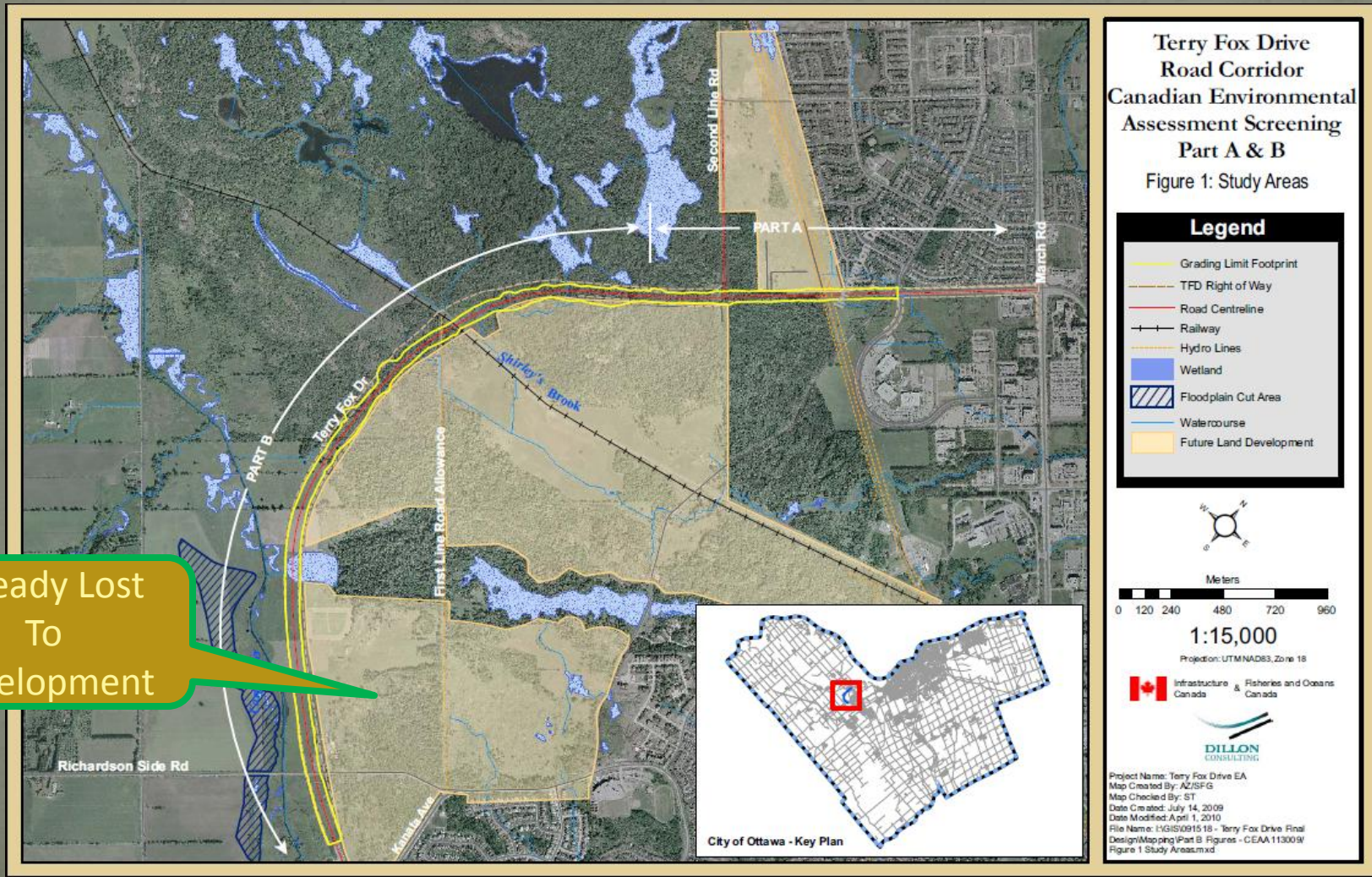
- American Ginseng
- Butternut
- Loggerhead Shrike
- Blanding's Turtle
- Whip-poor-will
- Golden Winged Warbler
- Western Chorus Frog
- Olive Sided Flycatcher
- Eastern Musk Turtle

## Special Concern

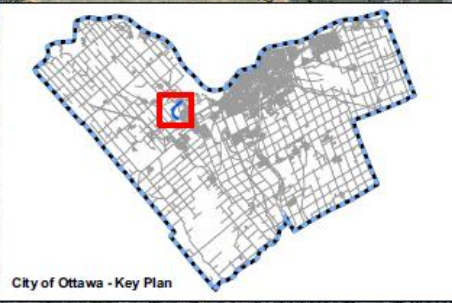
- Bridle Shiner
- Short Eared Owl
- Black Tern
- Common Nighthawk
- Snapping Turtle
- Eastern Milksnake
- Monarch Butterfly
- Bald Eagle
- Red Headed Woodpecker



# Development Triggered by TFDE



Already Lost To Development



# TFD Severs Eco-Connectivity of SMH

- What Scientists have to say:
  - *“Ecologically the worst possible place to put a road ... TFD dramatically reduces the ability of the SMH to withstand change”* [Daniel Brunton]
  - *“TFD will lead to the inevitable eradication of the Blanding’s Turtle – regardless of the mitigation measures proposed”* [Ron Brooks – Lead Turtle Scientist for Canada COWESIC Committee]
  - *“Grave concerns about the ecological damage caused by the TFD extension”* [City of Ottawa’s Forest & Greenspace Advisory Committee]
  - *“TFD creates a Berlin Wall that blocks eco-passage and kills anything that tries to cross it”* [Daniel Brunton]





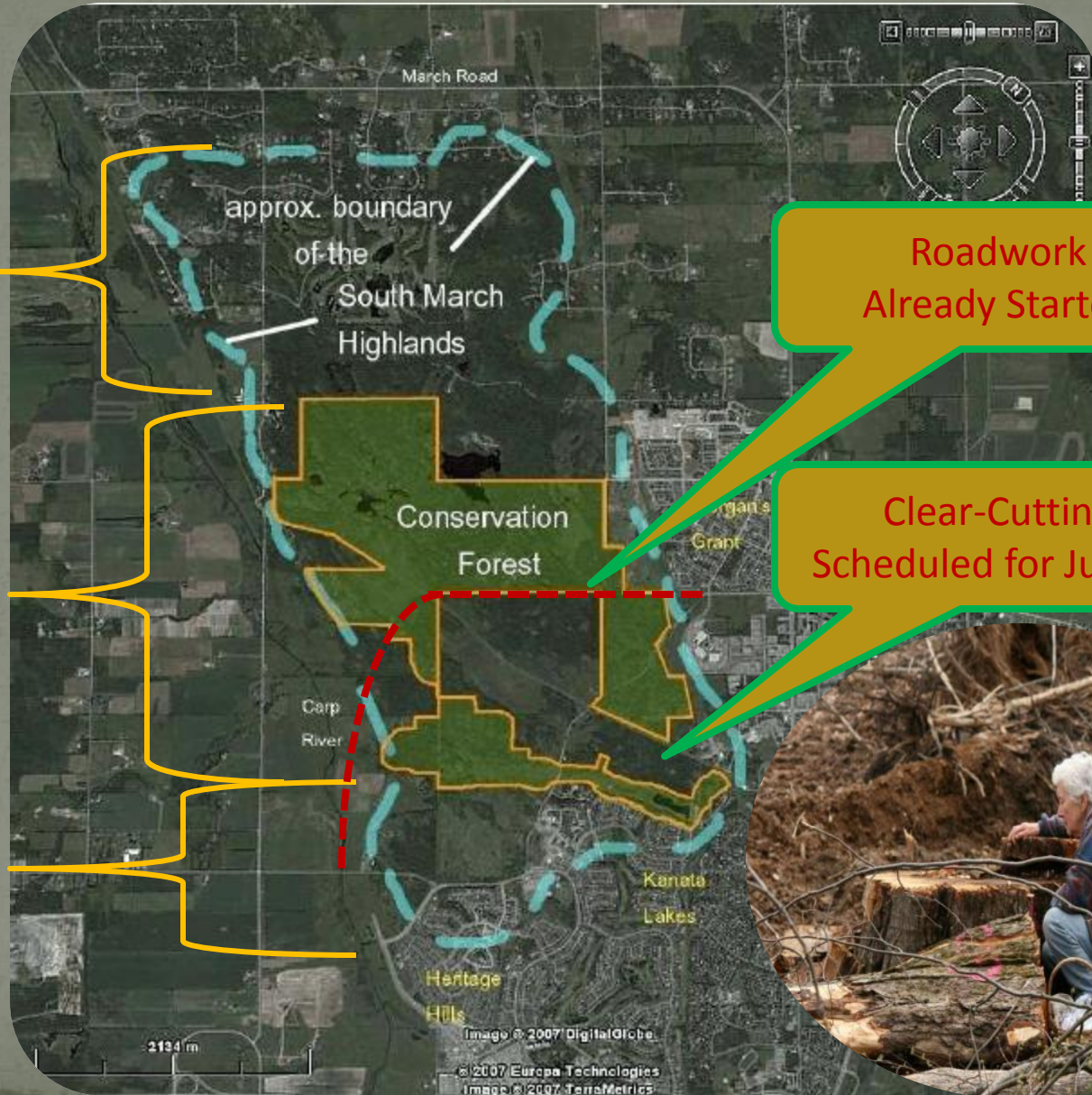
# Failure to Act Now = Lost Forever

Unprotected  
Steady Loss To  
Development

Piecemeal  
Protection

Gaping hole  
in centre

Already Lost  
Since Photo  
Was Taken



Roadwork  
Already Started

Clear-Cutting  
Scheduled for July 17



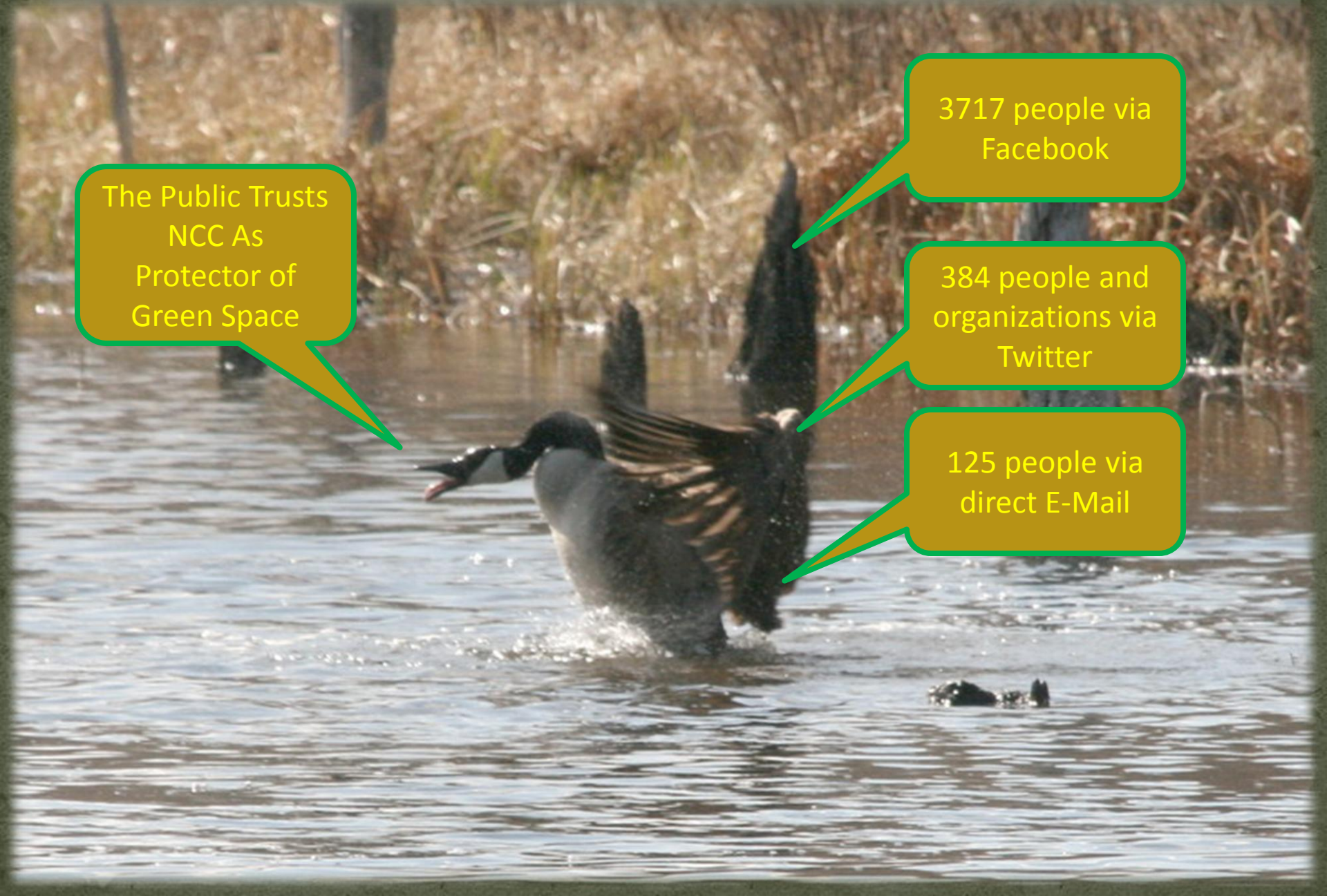
# The Public Wants NCC to Intervene Now!

The Public Trusts  
NCC As  
Protector of  
Green Space

3717 people via  
Facebook

384 people and  
organizations via  
Twitter

125 people via  
direct E-Mail



# Wall of Opposition to Development

- Coalition To Protect South March (4000+ people)
- David Suzuki Foundation
- Sierra Club of Canada
- Greenbelt Coalition
- Canadian Biodiversity Institute
- Canadian Parks & Wilderness
- Federation of Community Associations
- Green Party of Canada
- Ottawa Riverkeeper
- Ecology Ottawa
- Ottawa Valley Field Naturalists
- Ottawa Carleton Wildlife Centre



# An Alternative Vision

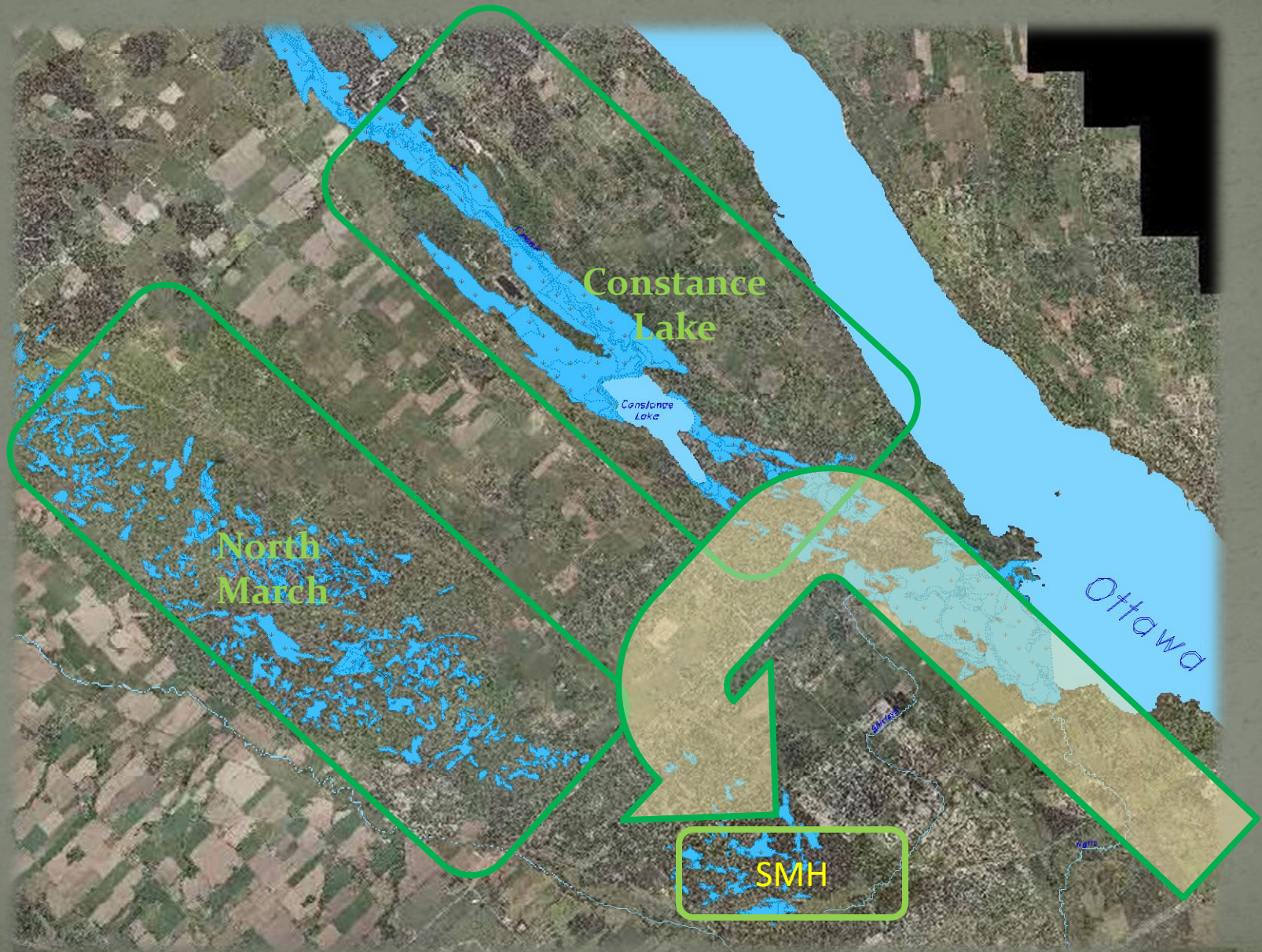
- Expanding the Greenbelt to incorporate the SMH
- Consistent with
  - ❖ Objectives of the NCC
  - ❖ Emerging Consensus on Greenbelt Master Plan
  - ❖ Longer Term Greenbelt Opportunities



# “Shepherd’s Hook” Extends Greenbelt



# Longer Term Eco-Corridors Extend Greenbelt





# 1. Establish Strategic Fund

- Apply “Gatineau Park model” to create Acquisition Fund
  - Consistent with Strategic Plan for National Capital
  - Develop land acquisition strategy for the Greenbelt
  - Seek Treasury Board Funding using public support
- Implement immediately for SMH and over long-term horizon to extend Greenbelt





## 2. Leverage With Eco-Capital Pool

- Leverage via capital partnerships with:
  - Land Trusts – e.g. Nature Conservancy of Canada
    - Pooled Funds
    - Eco-Tax Deductions
  - City of Ottawa
    - Opportunity to rebuild relationship
  - Private Sector Donations



# 3. Private Sector Leverage

- Why not offer advertising opportunities?
- Companies will pay for Branding
  - Amount varies proportionally with visibility & duration
  - Examples:
    - Palladium (aka Corel Centre, aka ScotiaBank Place)
      - 3 year branding for \$28 M
    - RIM Park in Waterloo
      - RIM funding assisted in Land Purchase
- Could offer branding for
  - Interpretive Centers
  - Specific Locations



## 4. Consider Zoning Swaps

- Does not cost anything when used in partnership with City of Ottawa
- Useful where developer owns land elsewhere that is not currently zoned for development
- City can allow re-zoning or development approval in exchange for land to be protected



# 5. Consider Expropriation

- In cases of significant public interest, such as the SMH, NCC can use its power of expropriation with full support of the public
  - Kanata residents want the NCC to expropriate land currently planned for development by KNL
  - Supported by ALL community associations in Ottawa



# 7. Land Swaps Should Only Be A Last Resort

- Restricted by Land Designations
  - Black Land (swappable)
    - Developed Land, Commercial, Transport, Institutional, Residential, Contaminated / Recovered Land
  - Green Land (not swappable)
    - Natural Environment, Forests, Wetlands, Ottawa River Islands, Agricultural , and other Green spaces
- Never swap
  - Green for Green (Sophie's Choice)



# 10 Key Messages Heard During Part 1A

1. Protect the Greenbelt
2. Turn Greenbelt into a Sustainability Showcase
3. Quantify and Communicate Greenbelt Values
4. Keep the Greenbelt Publicly Owned
5. No Net Loss Policy
6. Add More Land to the Greenbelt
7. Recognize that Greenbelt is Part of Our Survival
8. Limited Smart Growth
9. Greenbelt is Well Recognized & Appreciated by Public
10. Creatively Revisit the “Belt” in Greenbelt



# South March Highlands Within Greenbelt

- ✓ *Protect the Greenbelt*
- ✓ *Turn Greenbelt into a Sustainability Showcase*
- ✓ *Quantify and Communicate Greenbelt Values*
- ✓ *Keep the Greenbelt Publicly Owned*
- ✓ *No Net Loss Policy*
- ✓ *Add More Land to the Greenbelt*
- ✓ *Recognize that Greenbelt is Part of Our Survival*
- ✓ *Greenbelt is Well Recognized & Appreciated by Public*
- ✓ *Creatively Revisit the "Belt" in Greenbelt*



# Long Term View of Eco-Corridors Revitalizing The Emerald Necklace





Thank You - Merci

