

Proposed Expansion Priorities For Greenbelt Master Plan



Greenbelt Coalition
Coalition To Protect South March Highlands

Greenbelt Coalition Vision

- Greenbelt part of our natural heritage
 - Model of Biodiversity in an Urban Setting
- Emerald Necklace
 - Encompassing Natural Oasis of Bio-Diversity
 - Gatineau Park,
 - River Islands,
 - Designated Reservoirs of Bio-Diversity
 - Eco-Corridors in the Existing Greenbelt
 - Linking across the Reservoirs
 - Linking beyond the Reservoirs
- Sustainable and Environmentally Responsible Agriculture

Proposed Greenbelt Expansion Criteria

- Expansion of the Greenbelt should be considered where such expansion:
 - a) re-incorporates ecologically significant areas removed from the Greenbelt in 1996;
 - b) incorporates all of a significant ecosystem of which parts are already in the Greenbelt, whether federally or privately owned;
 - c) incorporates nearby environmentally significant natural areas;
 - d) protects nearby geologic or scientific or important historic features, e.g. ANSIs and PSWs;
 - e) provides and improves eco-connections / linkages for wildlife or restores broken links;
 - f) improves recreational trails to nearby significant protected natural areas;
 - g) protects significant waterways, e.g. cool to cold water streams such as Findlay Creek;
 - h) protects adjacent/nearby habitat of Species At Risk; and
 - i) protects adjacent farmland from urban sprawl.

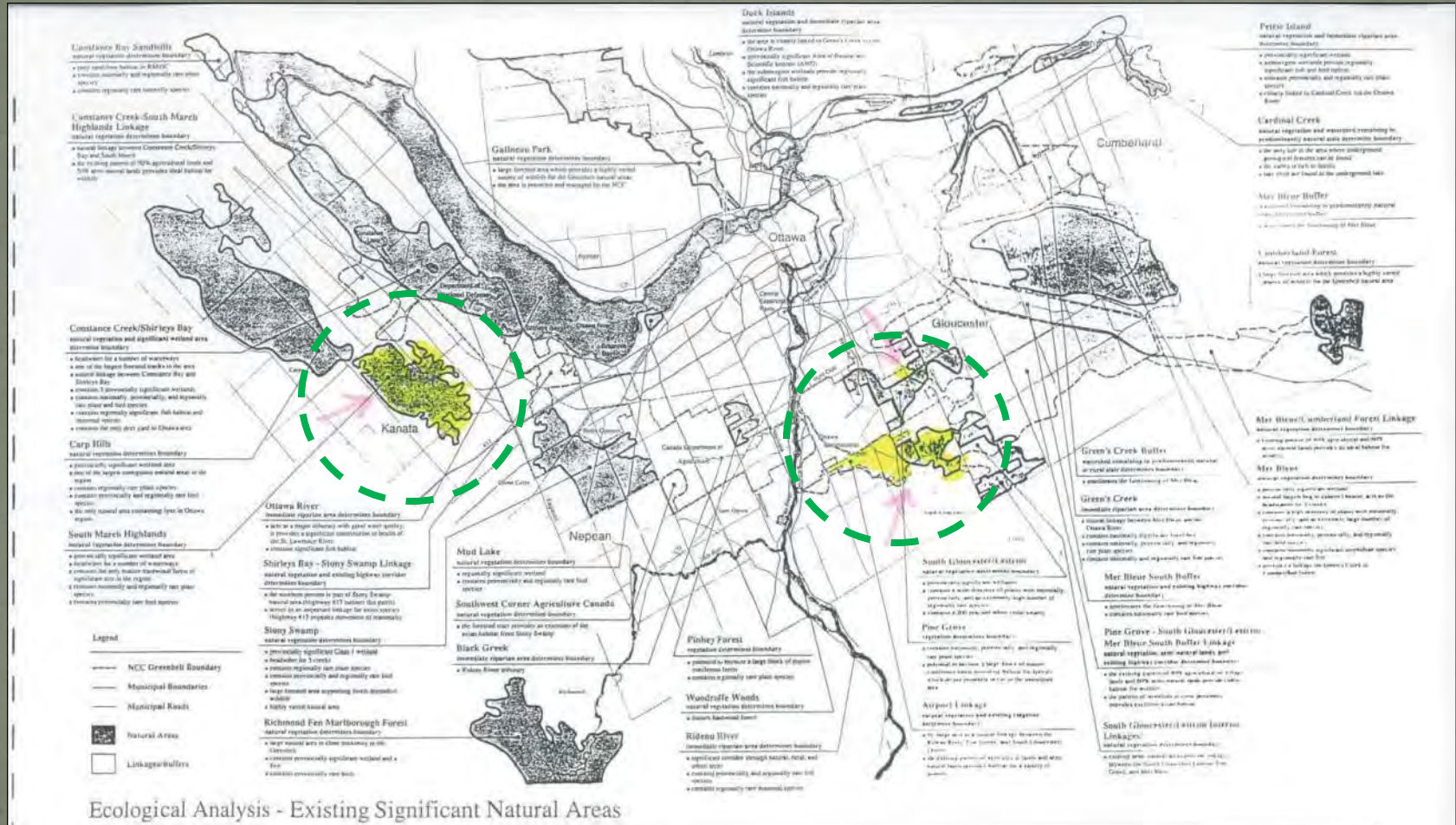
Long Term View of Eco-Corridors Revitalizing The Emerald Necklace



NCC Draft Vision Statement

- Significant Concerns
 - Lack of reference to Biodiversity
 - Built Environment & Infrastructure

Two Areas of Focus In This Presentation



Previous NCC Ecological Analysis of the Greenbelt [1991]

10 Key Messages Heard During Part 1A

1. Protect the Greenbelt
2. Turn Greenbelt into a Sustainability Showcase
3. Quantify and Communicate Greenbelt Values
4. Keep the Greenbelt Publicly Owned
5. No Net Loss Policy
6. Add More Land to the Greenbelt
7. Recognize that Greenbelt is Part of Our Survival
8. Limited Smart Growth
9. Greenbelt is Well Recognized & Appreciated by Public
10. Creatively Revisit the “Belt” in Greenbelt

2 Priorities for Greenbelt Expansion

1. South March Highlands
2. Blossom Park to Leitrim Wetlands

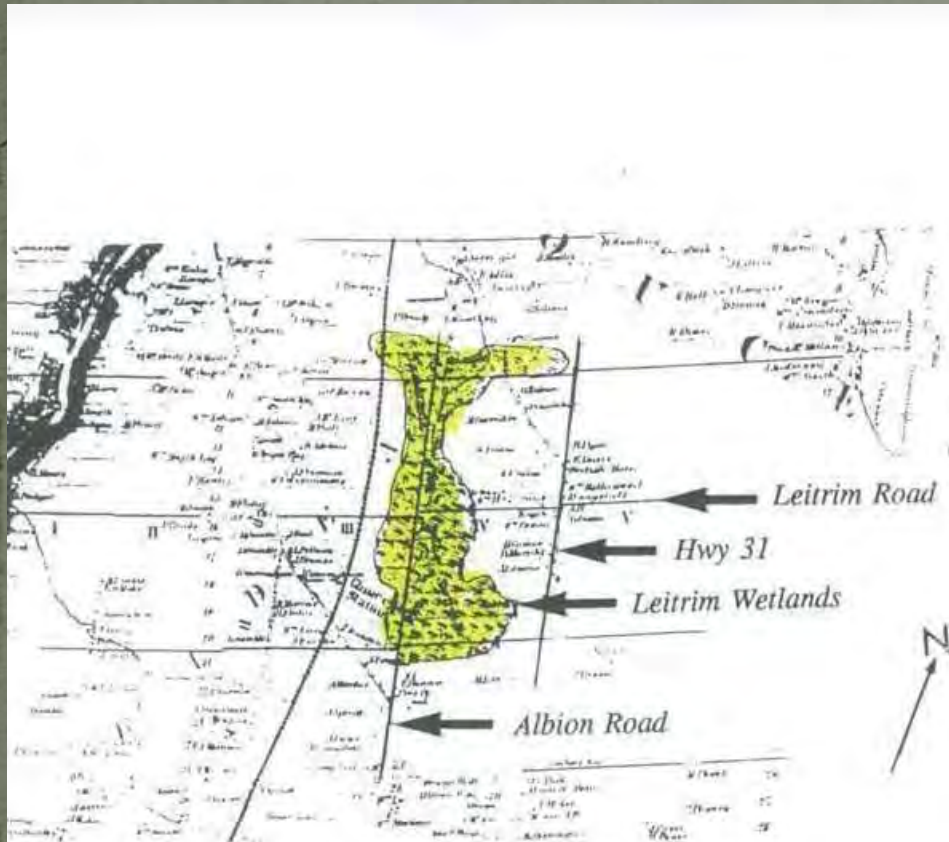
- ✓ *Protect the Greenbelt*
- ✓ *Turn Greenbelt into a Sustainability Showcase*
- ✓ *Quantify and Communicate Greenbelt Values*
- ✓ *Keep the Greenbelt Publicly Owned*
- ✓ *No Net Loss Policy*
- ✓ *Add More Land to the Greenbelt*
- ✓ *Recognize that Greenbelt is Part of Our Survival*
- ✓ *Greenbelt is Well Recognized & Appreciated by Public*
- ✓ *Creatively Revisit the "Belt" in Greenbelt*

Greenbelt Expansion Around Airport

- Adds back what was lost
 - South of Airport
 - Blossom Park Area
- Creates enhanced zone around Leitrim Wetlands

Historical Maps Showing Leitrim Wetlands

1863



1863 Walling Map of Carleton County

1879



1879 Belden Atlas of Carleton County

Leitrim Wetlands Circa 1830





LEITRIM WETLAND CIRCA 1830

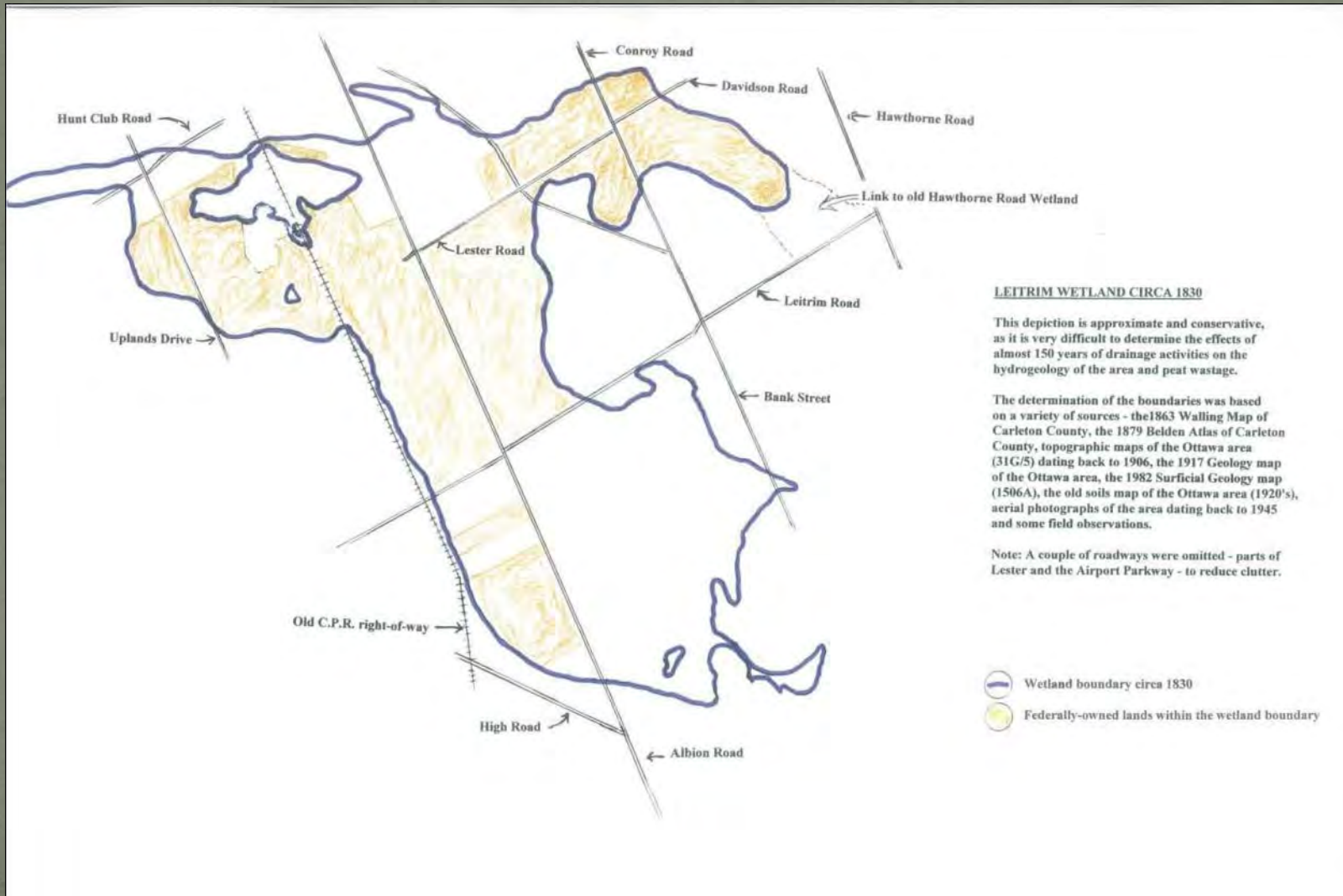
This depiction is approximate and conservative, as it is very difficult to determine the effects of almost 150 years of drainage activities on the hydrogeology of the area and peat wastage.

The determination of the boundaries was based on a variety of sources - the 1863 Walling Map of Carleton County, the 1879 Belden Atlas of Carleton County, topographic maps of the Ottawa area (31G/5) dating back to 1906, the 1917 Geology map of the Ottawa area, the 1982 Surficial Geology map (1506A), the old soils map of the Ottawa area (1920's), aerial photographs of the area dating back to 1945 and some field observations.

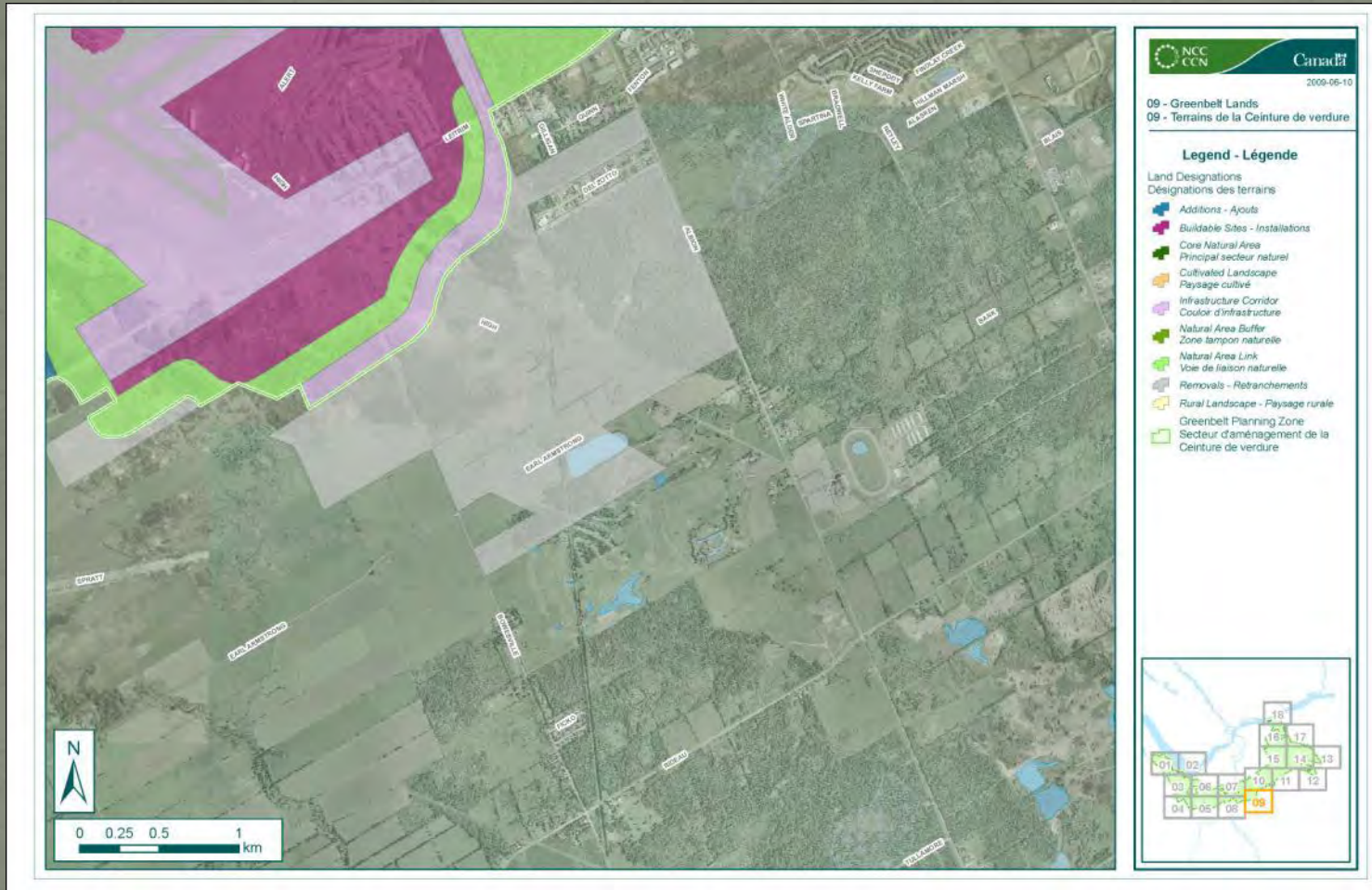
Note: A couple of roadways were omitted - parts of Lester and the Airport Parkway - to reduce clutter.

-  Wetland area
-  Known non-wetland area within wetland boundary

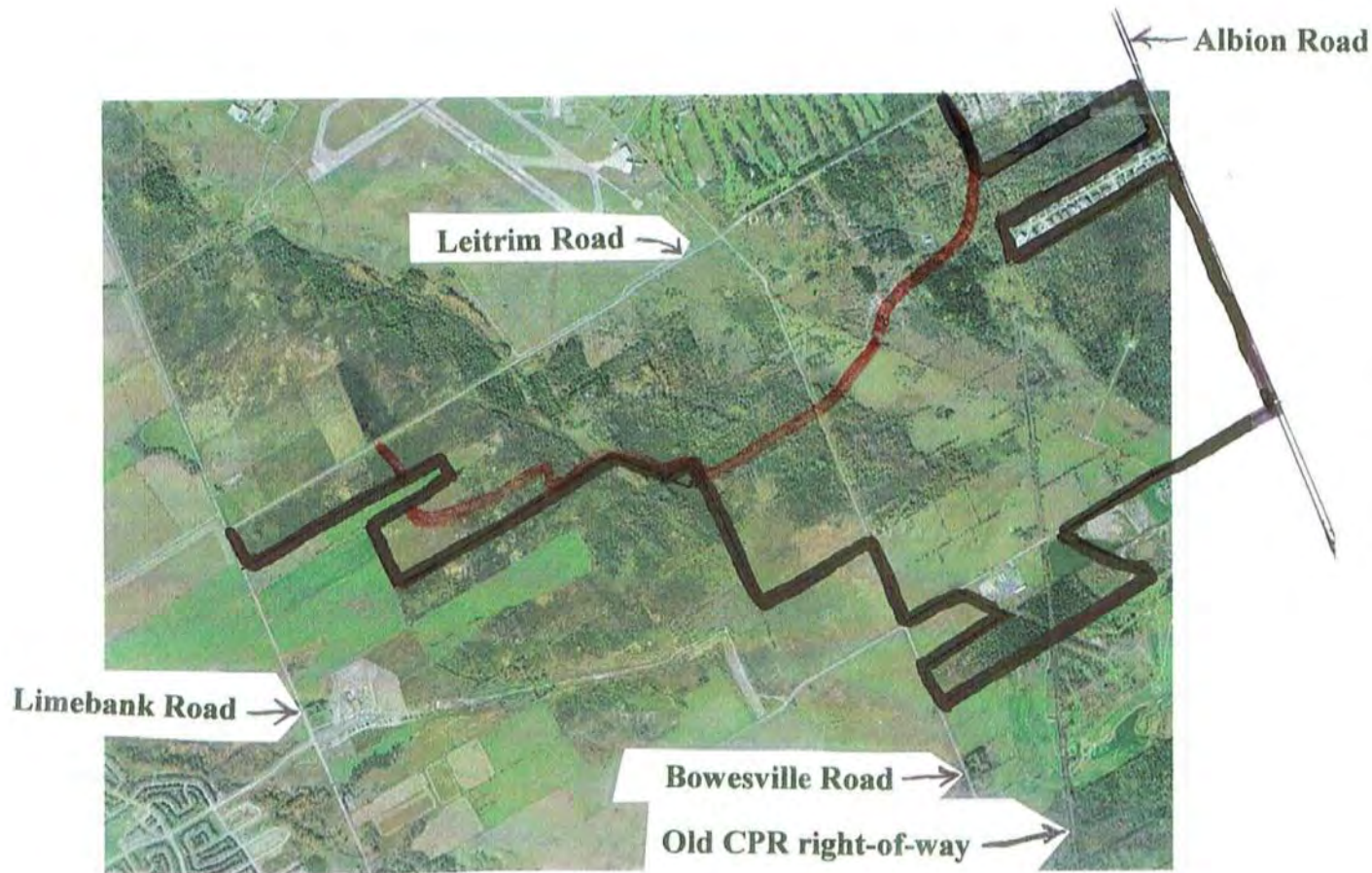
Federally Owned Lands Circa 1830



Areas Removed South of Airport



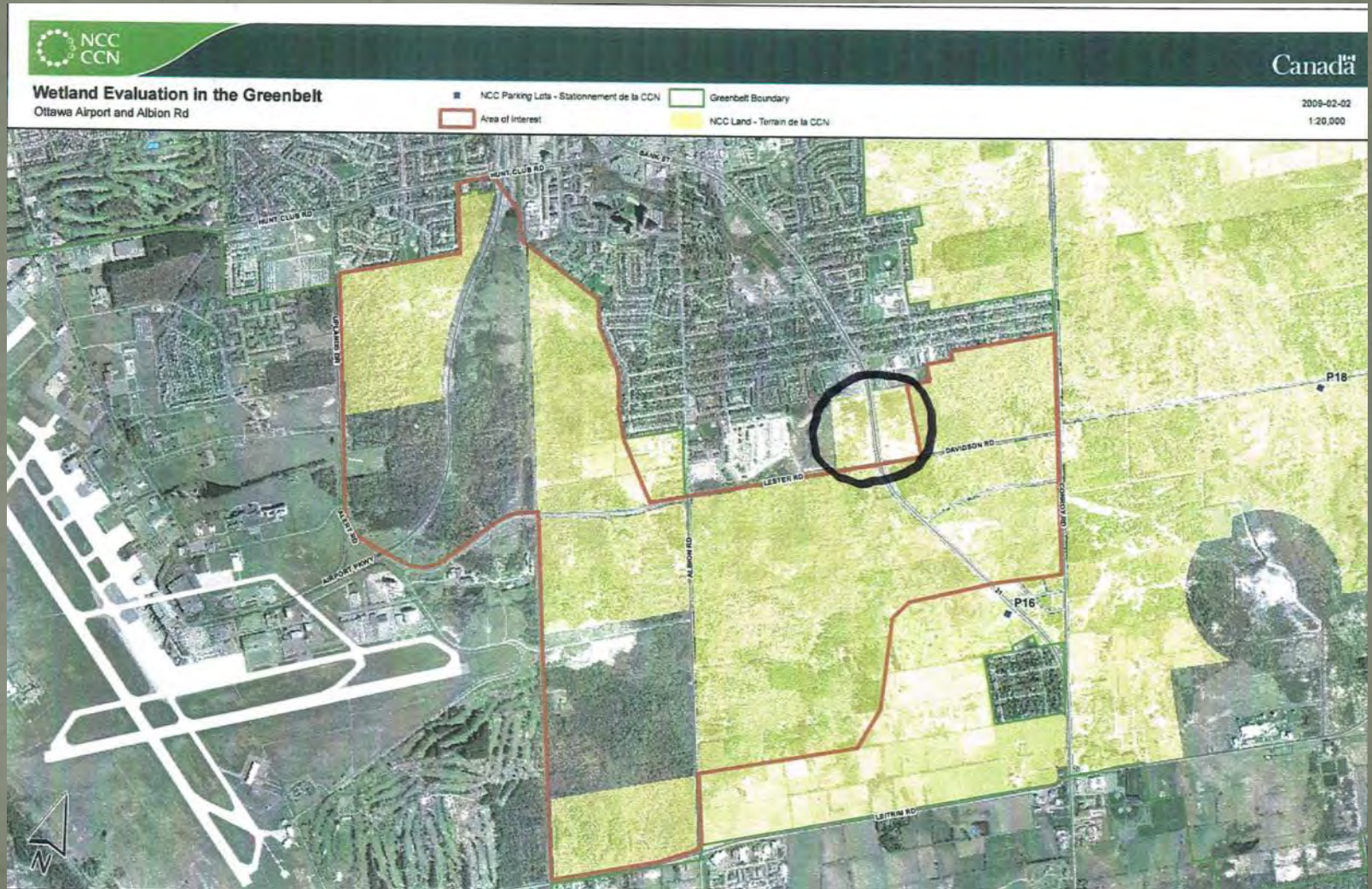
Former Greenbelt Area South of Leitrim Rd Between Albion and Limebank



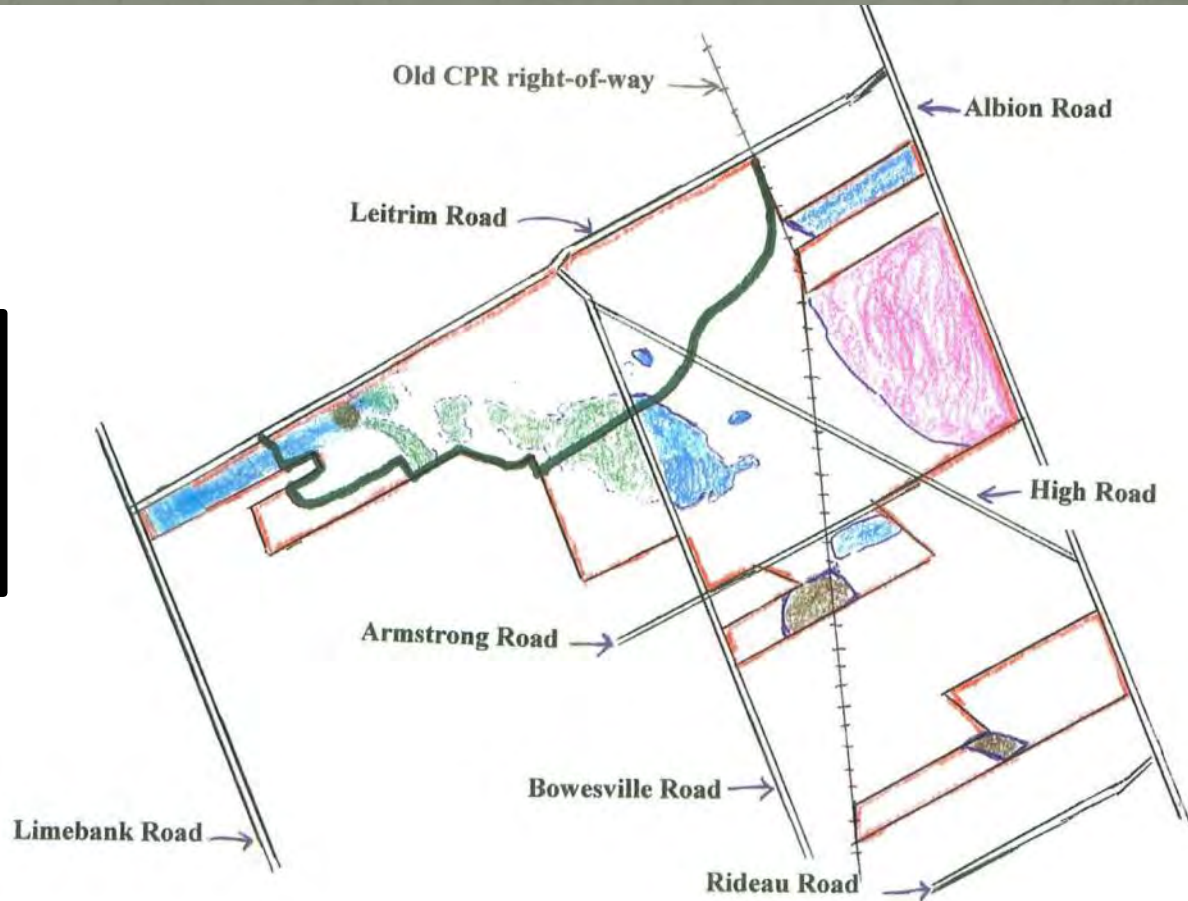
Present
Boundary

Former
Boundary

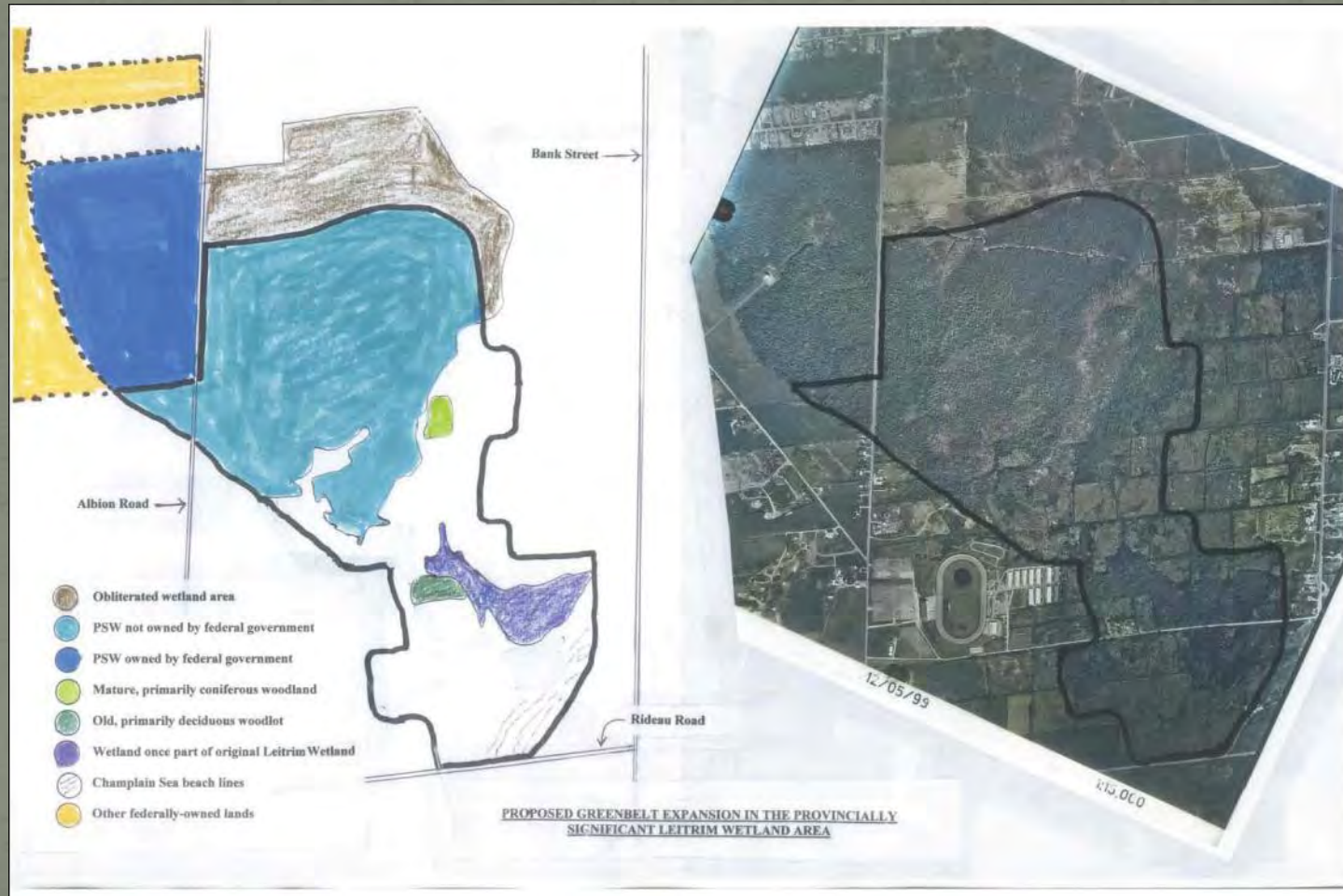
Predominantly Wetland Area Removed In Blossom Park



Wetland Areas on Federal Lands South of Leitrim Road



Proposed Leitrim Expansion



Why Expand Here?

Well Known That

- Federal government owns most of remaining parts of original Leitrim Wetland ecosystem including about 30% of the PSW
- Need to ensure that there is long-term protection of this important wetland area and its impressive biodiversity.
- Most of suggested expansion area has already been recognized by the NCC in 1991 as being a significant natural area
[ref. Ecological Analysis of the Greenbelt]
- About half of the PSW east of Albion road is or will be in the public domain.

Included In This Area Would be:

- Parts of the Provincially Significant Leitrim Wetland (a small piece west of Albion Road and a larger section east of Albion Road)
- Obvious wetland areas adjacent to the PSW that were missed or not added to the PSW by OMNR
- An upland wetland that was once part of the original Leitrim Wetland
- Habitat for SAR turtles
- A mature, primarily coniferous woodland
- An old, primarily deciduous woodlot
- A population of the Provincially Rare **(S3)** Handsome Sedge, *Carex formosa*;
- Regenerating woodland
- Old hedgerows;
- Some old fields
- A flight of ancient Champlain Sea beach lines
- A population of a natural, columnar form of Eastern White Cedar

National Capital's 3 Major Eco-Corridors



A Wild Island Inside Ottawa

(3x Larger Than Stanley Park)

Creating A Distinctive Setting



Old Growth Trees
> 100 Years Old

30 Eco-Types
Of Vegetation

10 Distinct
Habitats

Visible Canadian
Shield

Visible Pre-Cambrian Shield



Over
1 Billion
Years Old

LEGEND

- TERRY FOX DRIVE SITE
- ROADWAY
- RIVER OR STREAM
- WATERBODY
- ▨ FLOODPLAIN COMPENSATION AREA

SURFICIAL GEOLOGY

- 1a TILL, PLAIN WITH LOCAL RELIEF <5m
- 1b TILL, DRUMLINIZED
- 1c TILL, HUMMOCKY TO ROLLING WITH LOCAL RELIEF 5 TO 10 m
- 2 ICE CONTACT STRATIFIED DRIFT: GRAVEL & SAND
- 3 OFFSHORE MARINE DEPOSITS: CLAY, SILTY CLAY & SILT (GULLIES & RAVINES)
- 3a OFFSHORE MARINE DEPOSITS: CLAY, SILTY CLAY & SILT (GULLIES & RAVINES)
- 3b OFFSHORE MARINE DEPOSITS: CLAY & SILT UNDERLYING EROSIONAL TERRACES
- 3c OFFSHORE MARINE DEPOSITS: CLAY & SILT UNDERLYING EROSIONAL TERRACES (GULLIES & RAVINES)
- 3d DELTAIC AND ESTUARY DEPOSITS: MEDIUM TO FINE GRAINED SAND (GULLIES & RAVINES)
- 3e DELTAIC AND ESTUARY DEPOSITS: MEDIUM TO FINE GRAINED SAND (GULLIES & RAVINES)
- 3f NEARSHORE SEDIMENTS: GRAVEL, SAND & BOULDERS
- 3g NEARSHORE SEDIMENTS: FINE TO MEDIUM GRAINED SAND
- 4a ALLUVIAL DEPOSITS: SILTY SAND, SILT, SAND & CLAY
- 4b ALLUVIAL DEPOSITS: SILTY SAND, SILT, SAND & CLAY (GULLIES & RAVINES)
- 4c ALLUVIAL DEPOSITS: MEDIUM GRAINED STRATIFIED SAND WITH SOME SILT
- 4d ALLUVIAL DEPOSITS: MEDIUM GRAINED STRATIFIED SAND WITH SOME SILT (GULLIES & RAVINES)
- 5 ORGANIC DEPOSITS: MUCK & PEAT
- 6 DUNE
- 6a DUNE (GULLIES & RAVINES)
- 7 LANDSLIDE AREA
- 7a LANDSLIDE AREA (GULLIES & RAVINES)
- r1 BEDROCK: INTRUSIVE & METAMORPHIC
- r2 BEDROCK: LIMESTONE, DOLOMITE, SANDSTONE & LOCAL SHALE
- zz BEDROCK: LIMESTONE, DOLOMITE, SANDSTONE & LOCAL SHALE (GULLIES & RAVINES)
- zz WATER

NOTE:
This figure is to be read in conjunction with the accompanying Guide Associates Ltd. report No. 06-1121-0027

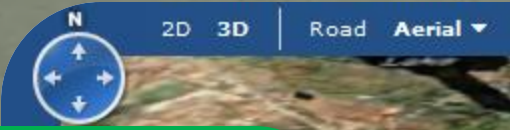
REFERENCE:
BELANGER, J. R., URBAN GEOLOGY OF THE NATIONAL CAPITAL AREA, GEOLOGICAL SURVEY OF CANADA, OPEN FILE D3056, 2001
Projection: Transverse Mercator Datum: NAD 83 Coordinate System: UTM Zone 18

0 500 1000 METRES

PROJECT: TERRY FOX DRIVE PERMIT TO TAKE WATER

TITLE: SURFICIAL GEOLOGY

“Ottawa’s Most Important Ecological Reservoir”



Shirley's Bay

North Kanata

South March Highlands



Integral to Shirley's Bay Hydrology

SMH
Integral
To
Greenbelt
Water
Quality

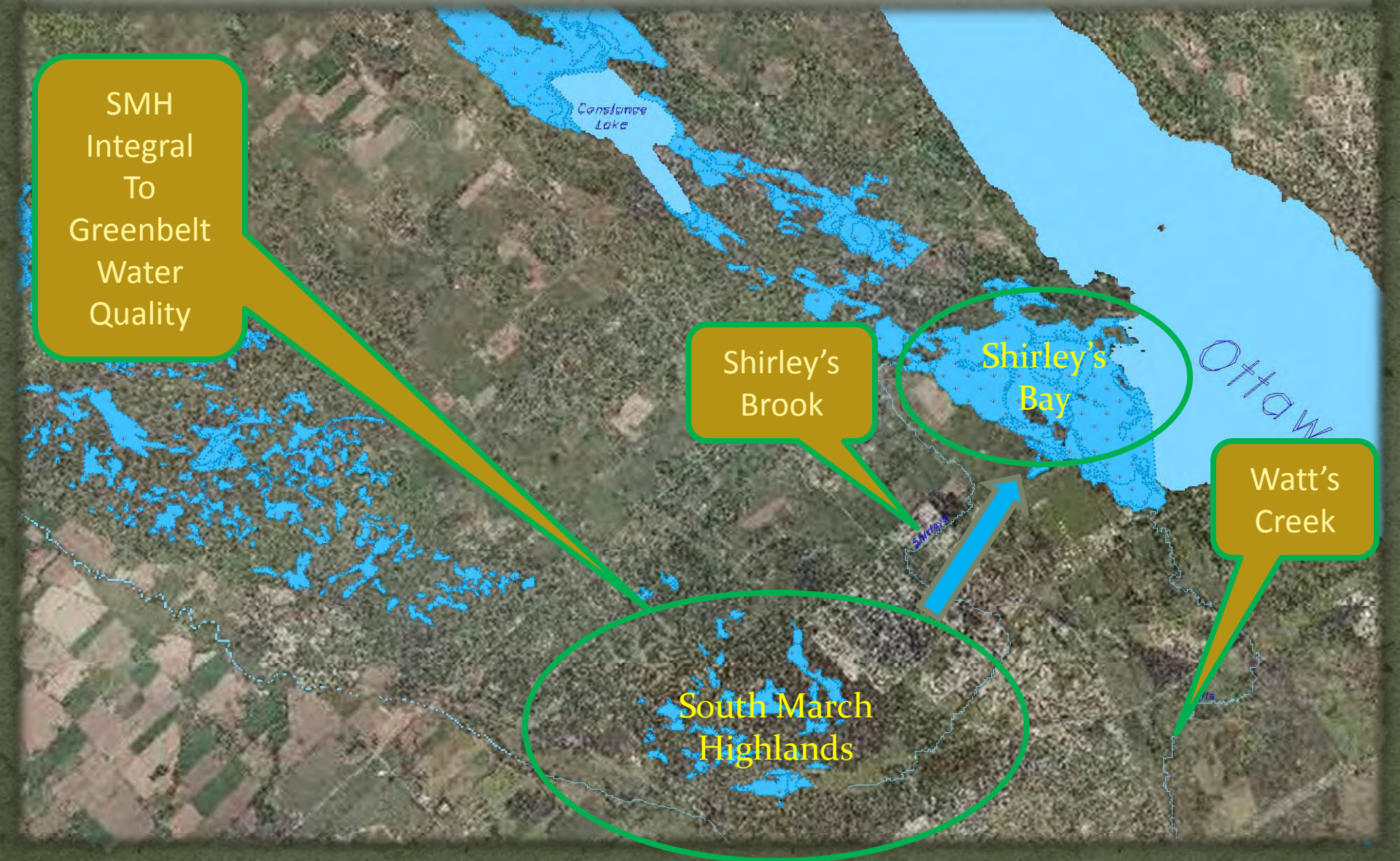
Shirley's
Brook

Shirley's
Bay

Watt's
Creek

South March
Highlands

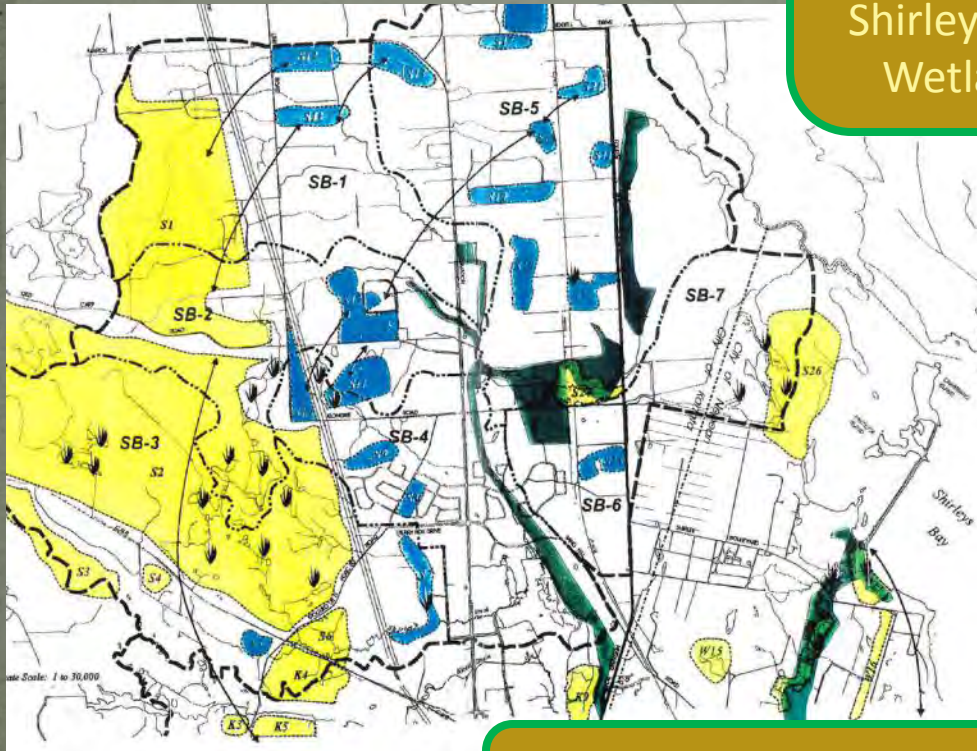
Ottawa



Wildlife Corridors in Shirley's Brook Subwatershed

Source: Shirley's Brook / Watt's Creek Subwatershed Study, 1999

SMH
Natural Eco-
Connection
To
Shirley's Bay
Wetlands



Fish of Special Concern
(Bridle Shiner)

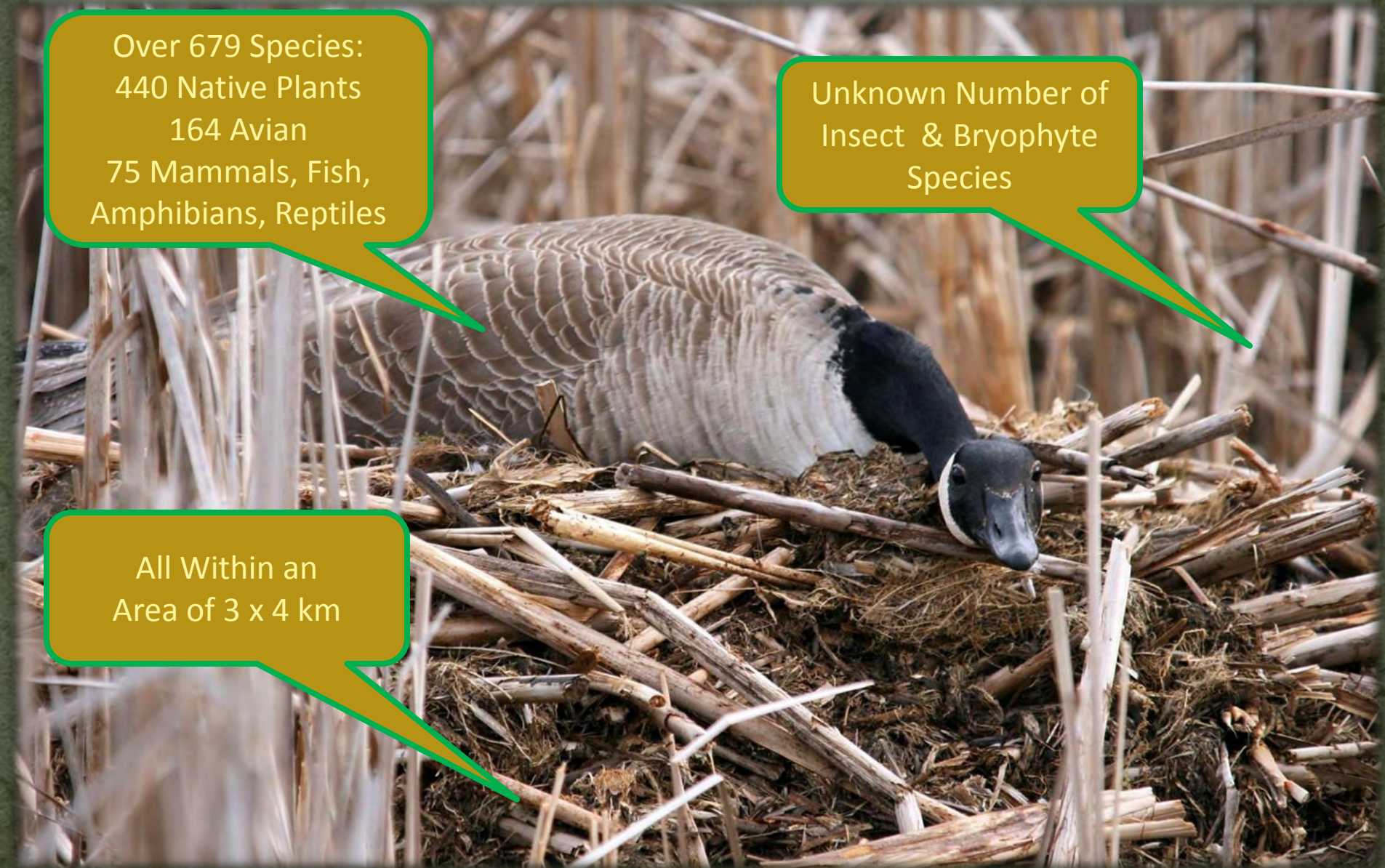
“Densest Bio-Diversity In Ottawa”

[Brunton, 2008]

Over 679 Species:
440 Native Plants
164 Avian
75 Mammals, Fish,
Amphibians, Reptiles

Unknown Number of
Insect & Bryophyte
Species

All Within an
Area of 3 x 4 km



Provincially Significant Life Science Area

895 Hectares
Rated ANSI

440 Species
Native Vascular Plants

Highest Floristic
Diversity of Any
Natural Area in Ottawa

5.08 = Highest
Coefficient of
Conservation in
Ottawa

2 Endangered
6 Provincially Rare
64 Regionally Rare
50 Uncommon
Native Vascular Plants



+ Provincially Significant Wetland Complex

114 Hectares
Rated ANSI

164 Avian Species
Observed

1 Endangered
3 Threatened
5 Special Concern
30 Regionally Rare
Avian Species

136 Avian Species
Known To Nest in SMH



+ Undocumented Number of Vernal Pools

Over 26 identified species of
Herpetofauna

3 Threatened Species
2 Special Concern

Insect of Special Concern
(Monarch Butterfly)



18 Known Species At Risk

Endangered or Threatened

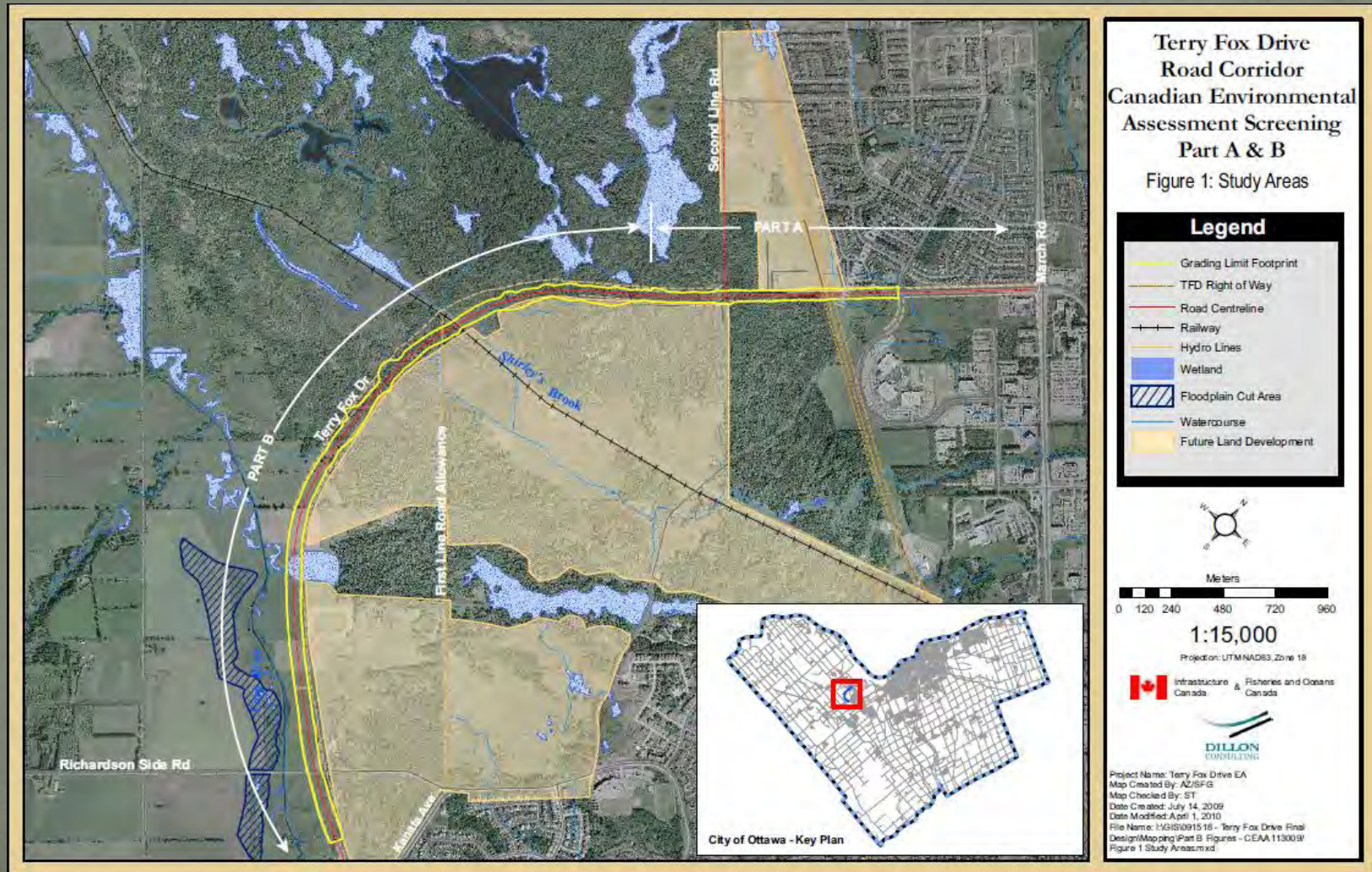
- American Ginseng
- Butternut
- Loggerhead Shrike
- Blanding's Turtle
- Whip-poor-will
- Golden Winged Warbler
- Western Chorus Frog
- Olive Sided Flycatcher
- Eastern Musk Turtle

Special Concern

- Bridle Shiner
- Short Eared Owl
- Black Tern
- Common Nighthawk
- Snapping Turtle
- Eastern Milksnake
- Monarch Butterfly
- Bald Eagle
- Red Headed Woodpecker



Development Triggered by TFDE



TFD Severs Eco-Connectivity of SMH

- What Scientists have to say:
 - *“Ecologically the worst possible place to put a road ... TFD dramatically reduces the ability of the SMH to withstand change”* [Daniel Brunton]
 - *“TFD will lead to the inevitable eradication of the Blanding’s Turtle – regardless of the mitigation measures proposed”*
[Ron Brooks – Lead Turtle Scientist for Canada COWESIC Committee]
 - *“Grave concerns about the ecological damage caused by the TFD extension”* [City of Ottawa’s Forest & Greenspace Advisory Committee]
 - *“TFD creates a Berlin Wall that blocks eco-passage and kills anything that tries to cross it”* [Daniel Brunton]

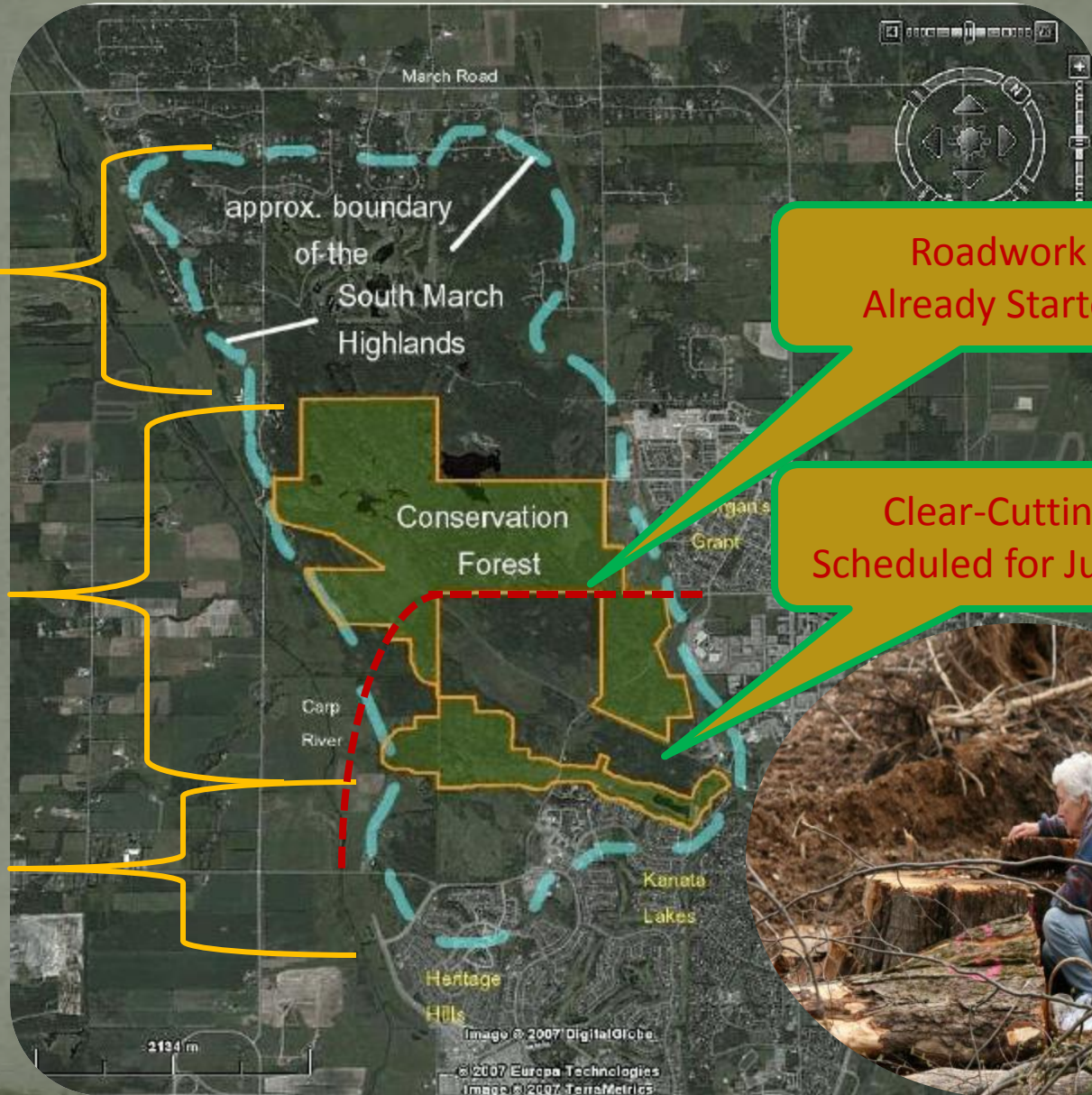
Failure to Act Now = Lost Forever

Unprotected
Steady Loss To
Development

Piecemeal
Protection

Gaping hole
in centre

Already Lost
Since Photo
Was Taken

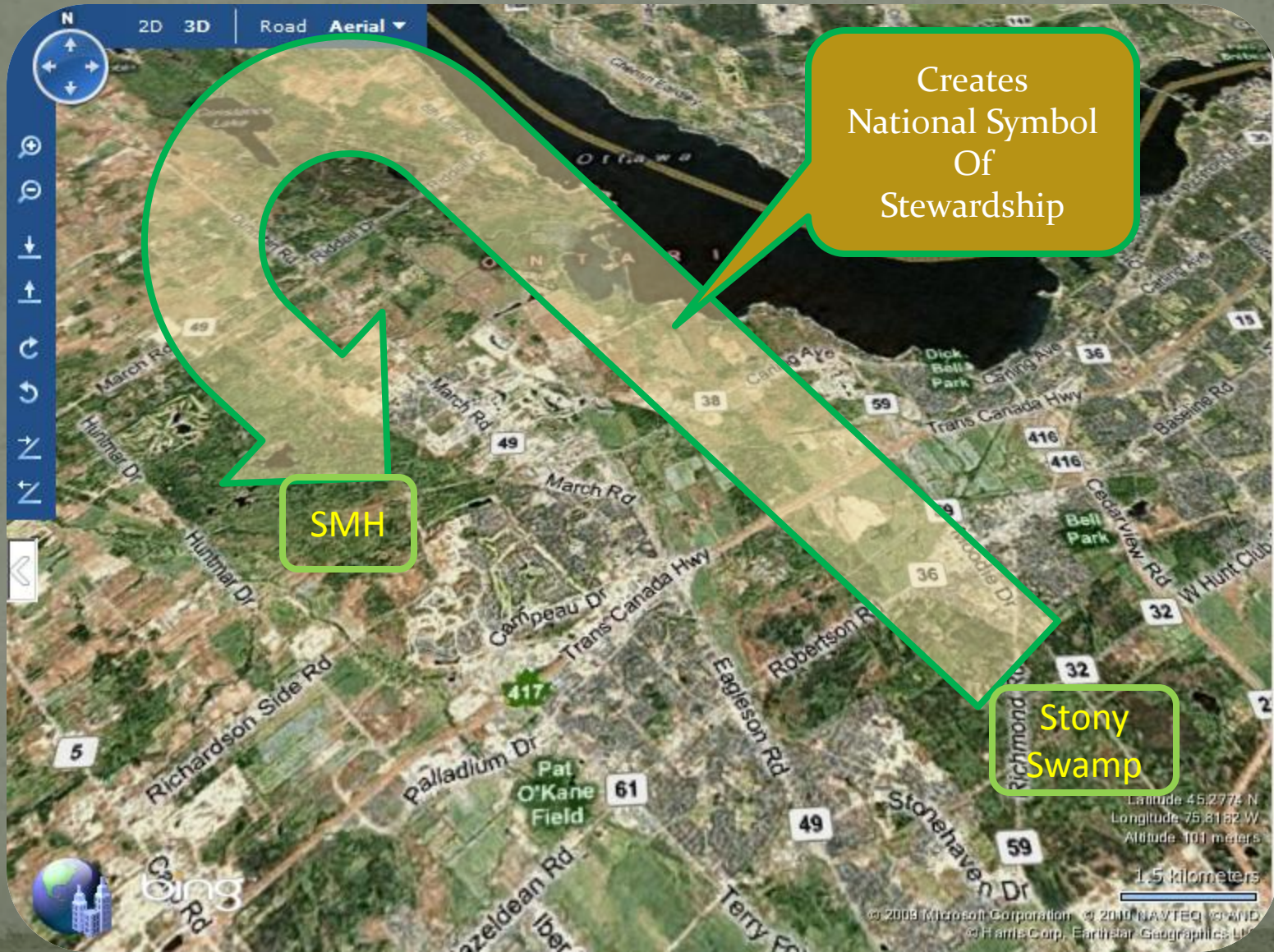


Roadwork
Already Started

Clear-Cutting
Scheduled for July 17



“Shepherd’s Hook” Extends Greenbelt



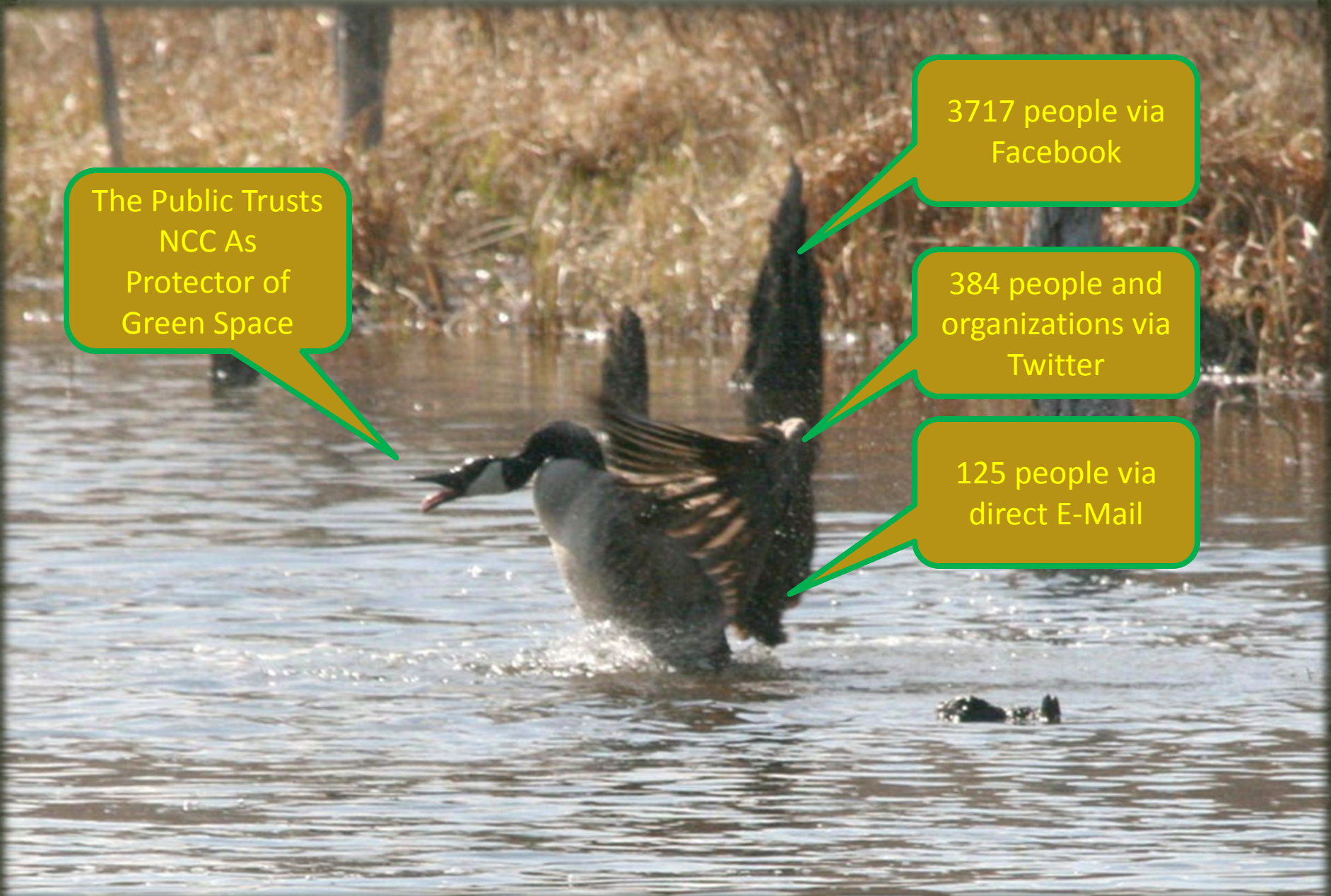
The Public Wants NCC to Intervene Now!

The Public Trusts
NCC As
Protector of
Green Space

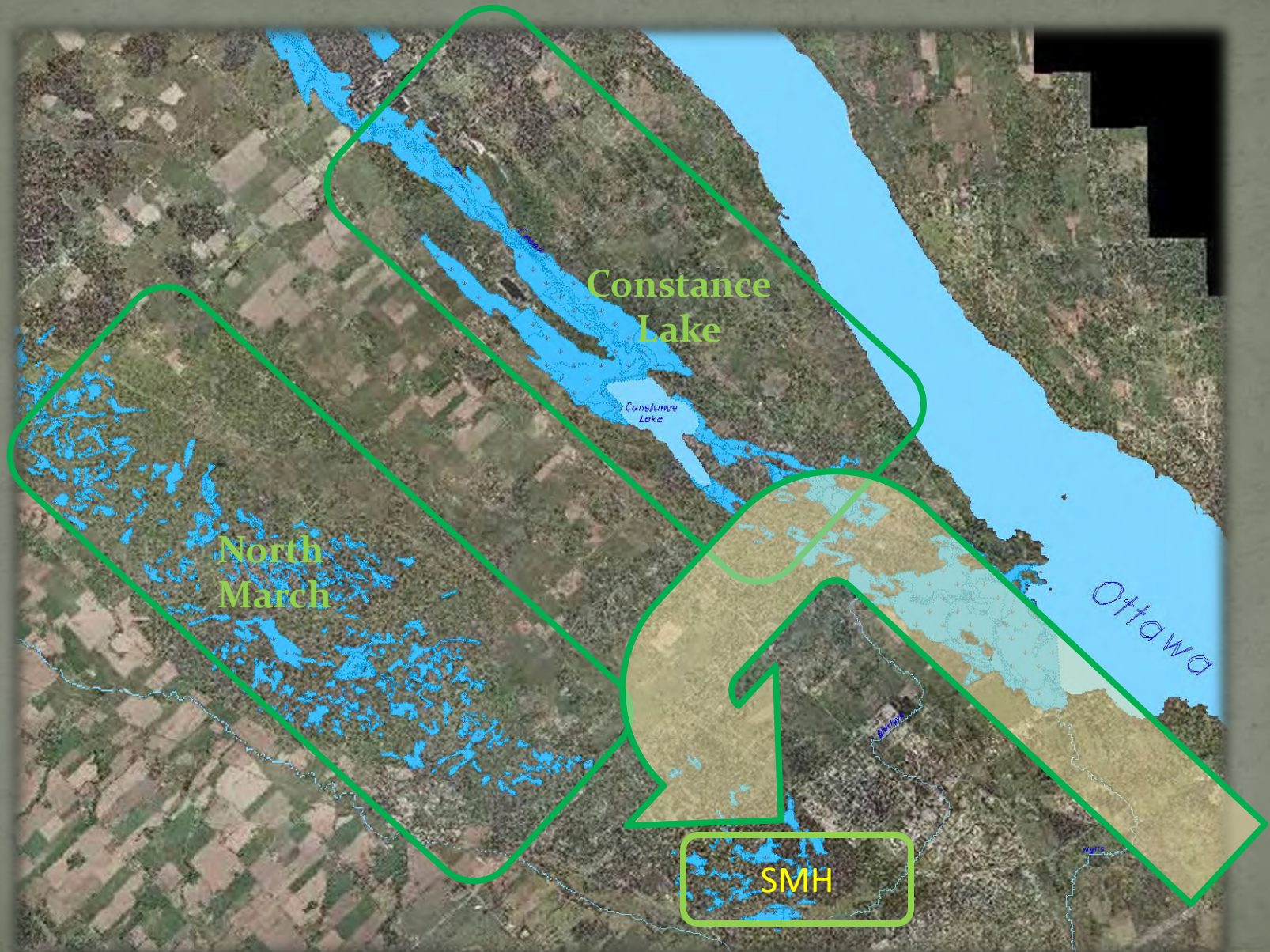
3717 people via
Facebook

384 people and
organizations via
Twitter

125 people via
direct E-Mail



Longer Term Eco-Corridors Extend Greenbelt



Long Term View of Eco-Corridors Revitalizing The Emerald Necklace



Creative Solutions – Strategic Fund

- Apply Gattineau Park model to create Acquisition Fund
 - Develop land acquisition strategy for the Greenbelt
 - Seek Treasury Board Funding
 - Implement over long-term horizon
 - Consistent with Strategic Plan for National Capital

Creative Solutions – Eco-Capital Pool

- Leverage the impact of this fund via capital partnerships with:
 - City of Ottawa
 - Land Trusts – e.g. Nature Conservancy of Canada
 - Pooled Funds
 - Eco-Tax Deductions
 - Private Sector Donations

Private Sector Participation

- Branded Purchasing with the Private Sector
 - Companies will pay for Branding
 - Amount varies proportionally with visibility
 - Palladium (aka Corel Centre, aka ScotiaBank Place)
 - 3 year branding for \$28 M
 - RIM Park in Waterloo
 - Perpetual branding
- Why not offer branding opportunities to assist in land purchases?

Land Swaps Should Only Be A Last Resort

- Restricted by Land Designations
 - Black Land (swappable)
 - Developed Land, Commercial, Transport, Institutional, Residential, Contaminated / Recovered Land
 - Green Land (not swappable)
 - Natural Environment, Forests, Wetlands, Ottawa River Islands, Agricultural , and other Green spaces
- Never swap
 - Green for Green (Sophie's Choice)
 - Green for Black (Negative Choice)
- Consider swapping
 - Black to obtain Green (Positive Choice)
 - Note that Black is valued higher than Green
 - Swap ratios can be 10 : 1 or higher

Discussion on Next Steps

Thank You - Merci

