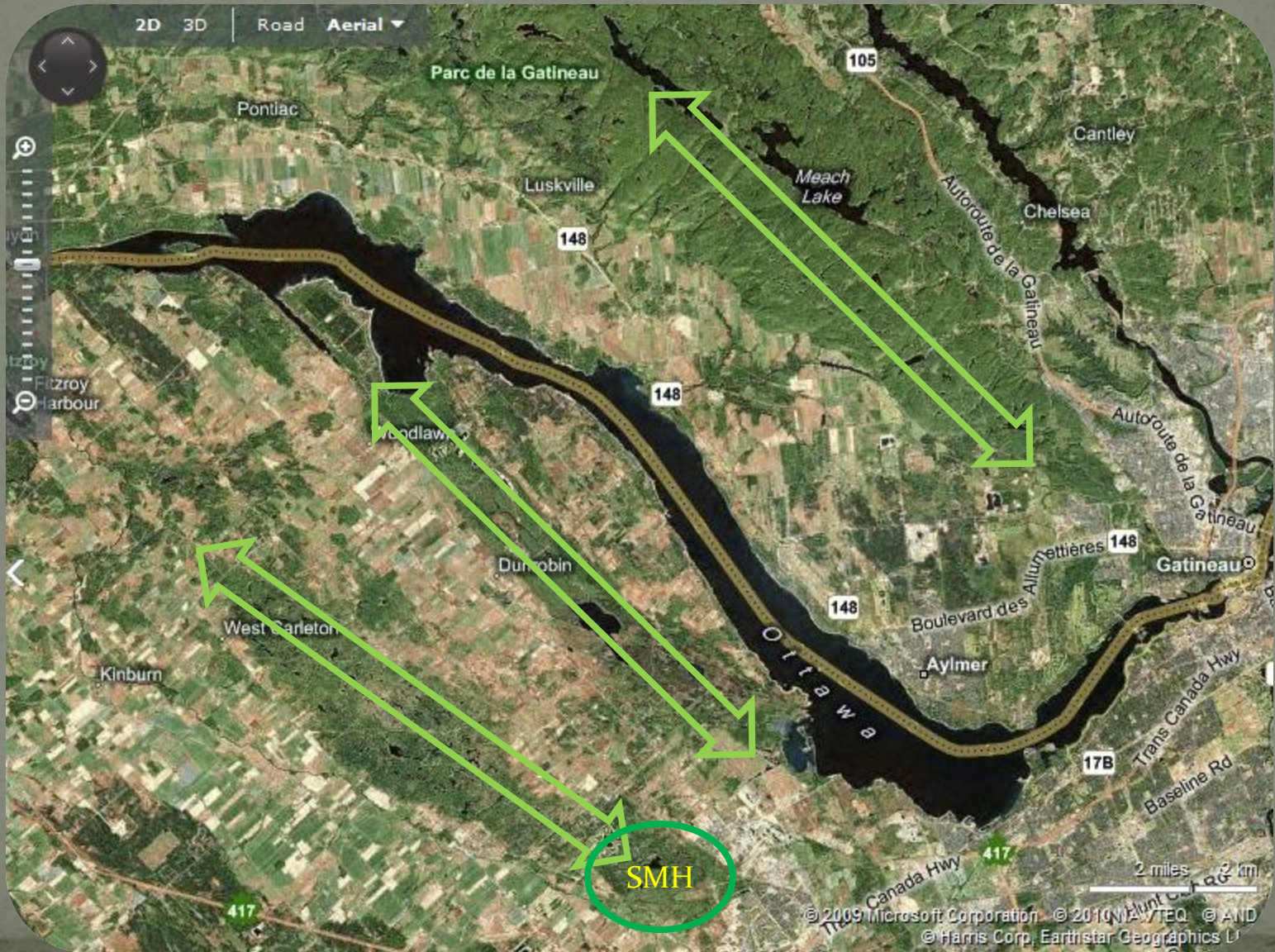


Adding South March Highlands To the GreenBelt

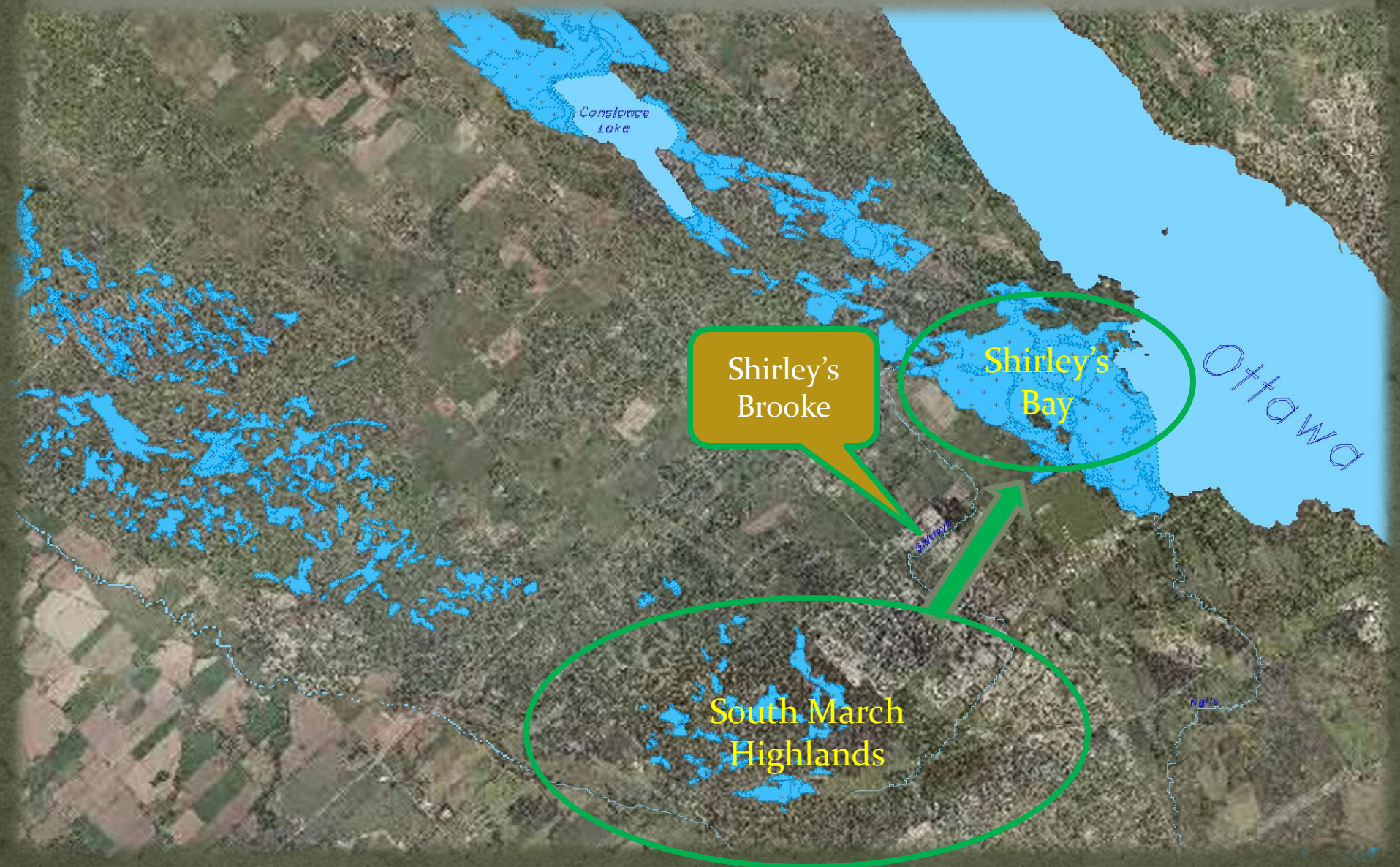


Paul Renaud
Coalition To Protect South March Highlands

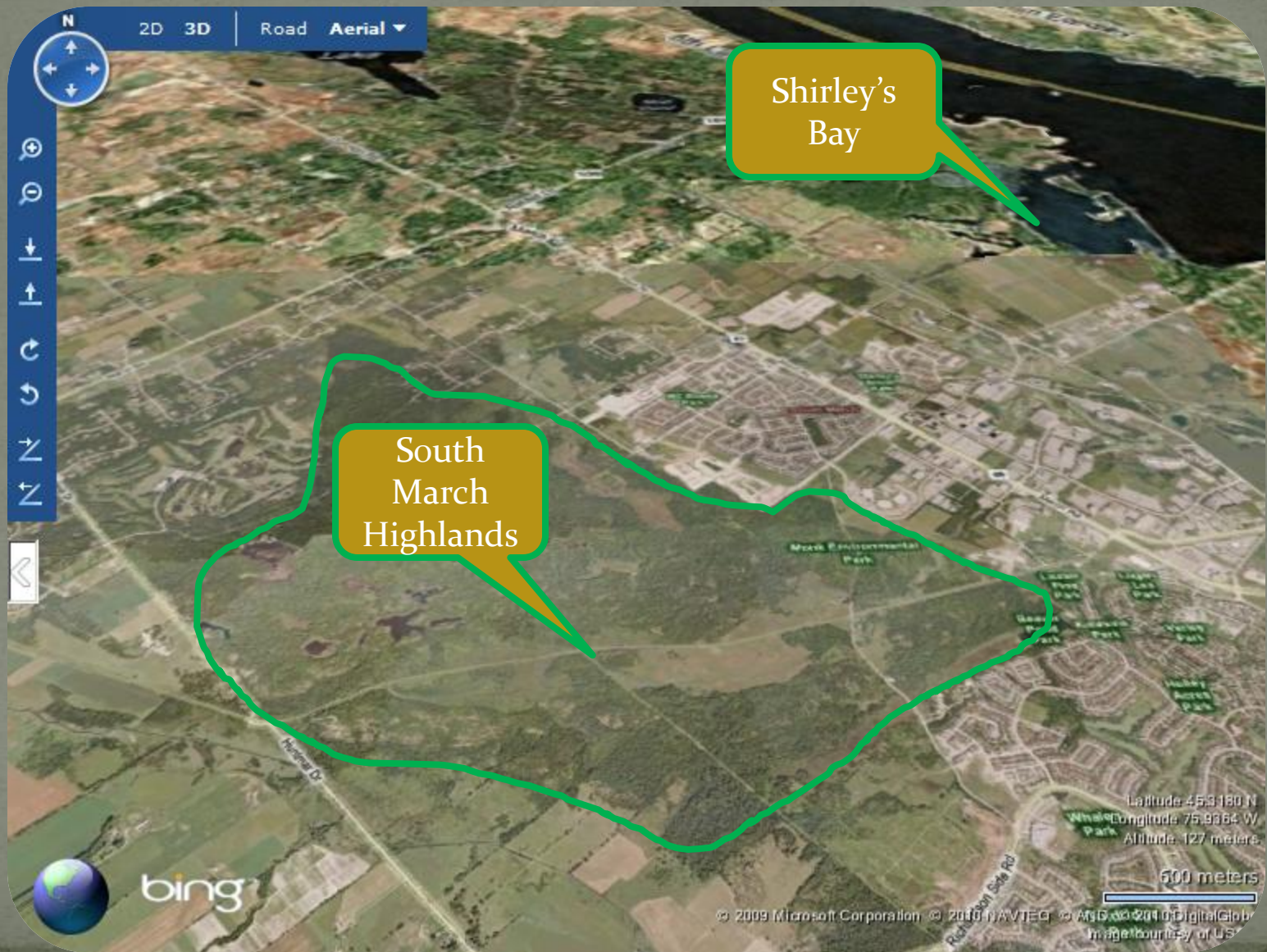
Ottawa's Western Eco-Corridors



Integral to Shirley's Bay Hydrology



Ottawa's Most Important Ecological Reservoir



Provincially Significant Life Science Area

895 Hectares
Rated ANSI



Provincially Significant Wetland Complex

114 Hectares
Rated ANSI



Undocumented Number of Vernal Pools

Over 26 identified
species of Herpetofauna



***Densest
Bio-Diversity
In Ottawa***

[Brunton, 2008]

Over 679 Species:

- 440 Native Plants
- 164 Bird Species
- 75 Species of Mammals, Fish, Reptiles, Amphibians
- Uncounted insects and fungi

***All within an
Area of 3 x 4 km***



Species At Risk in SMH

Endangered or Threatened

- American Ginseng

- Butternut
- Loggerhead Shrike
- Blanding's Turtle
- Whip-poor-will
- Golden Winged Warbler
- Western Chorus Frog
- Eastern Musk Turtle
- Olive Sided Flycatcher

Special Concern

- Bridle Shiner

- Short Eared Owl
- Black Tern
- Common Nighthawk
- Snapping Turtle
- Eastern Milksnake
- Monarch Butterfly
- Bald Eagle
- Red Headed Woodpecker

44 Regionally Significant Plants

30 Regionally Significant Birds

Old-Growth Forest

Largest White-Tail Deer Yard in Ottawa (925 ha)

What Are We Doing To Protect It?



40 Years of Negligence

Unprotected
Losing To
Development

Piecemeal
Protection

Gaping hole
in centre

Already Lost
to
Development



Less Than
1/3 Remains
Of Land
"Protected"
By 1972 OP

Impact of Terry Fox Drive



TFD Severs Eco-Connectivity of SMH

- **Scientific Conclusions:**

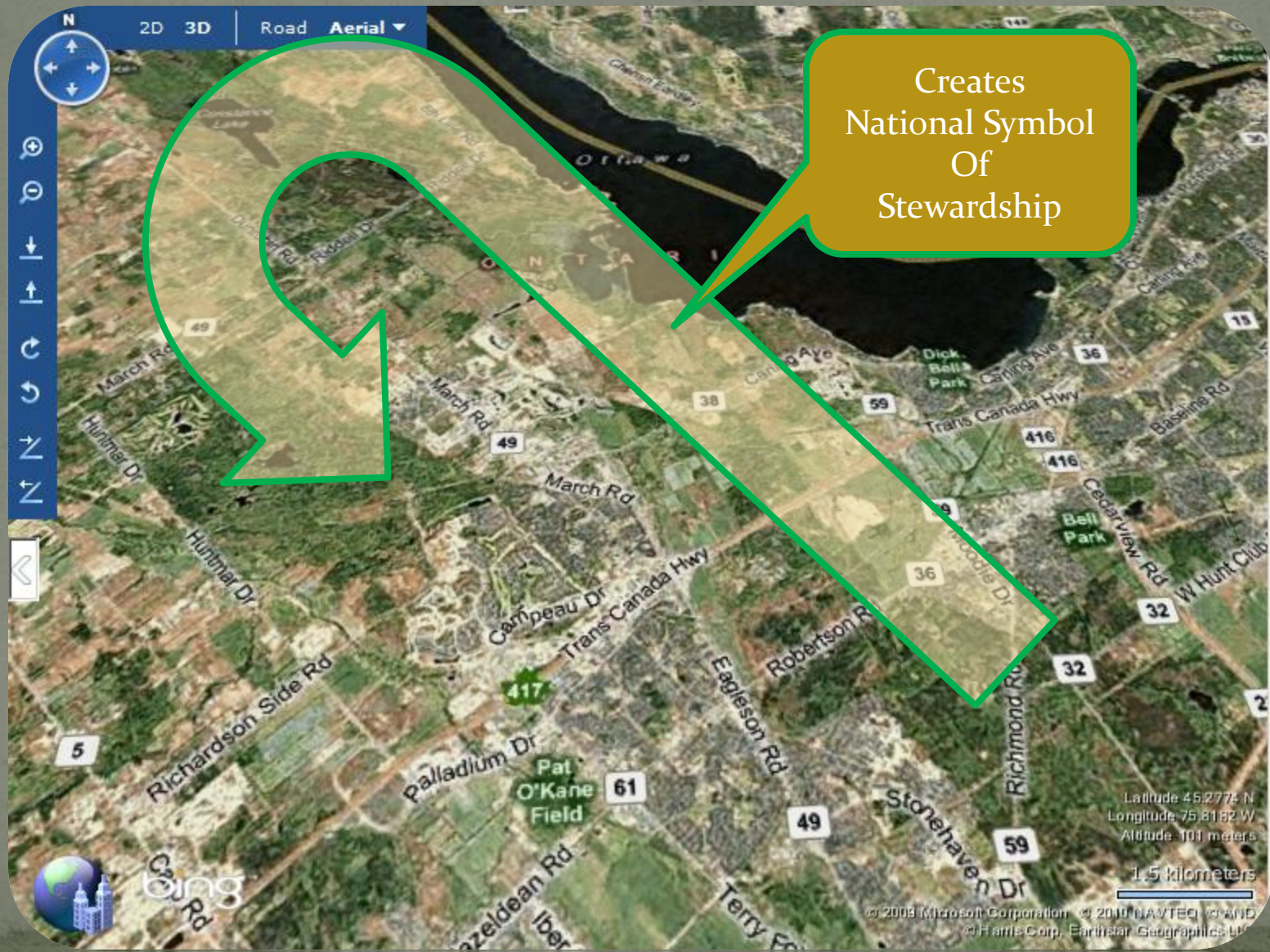
- “TFD creates a Berlin Wall that blocks eco-passage and kills anything that tries to cross it” [Daniel Brunton]
- “TFD will lead to the inevitable eradication of the Blanding’s Turtle – regardless of the mitigation measures proposed” [Ron Brooks]
- “Grave concerns about the ecological damage caused by the TFD extension” [OFGAC]
- “TFD dramatically reduces the ability of the SMH to withstand change ” [Daniel Brunton]

City of Ottawa's Response

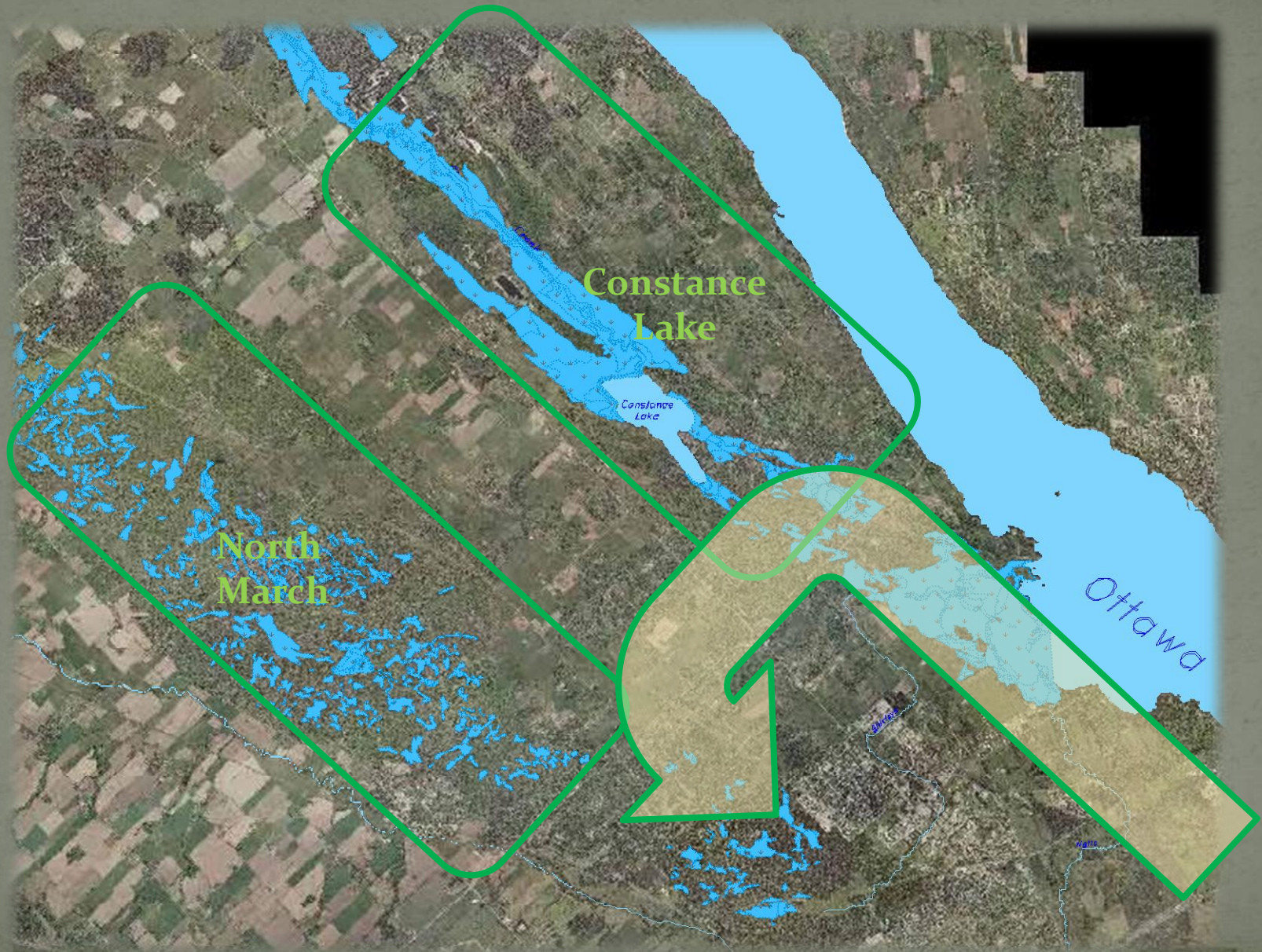
McNamara's Fallacy: [Daniel Yankelovich]

1. Measure what can be measured
 - Haphazardly commissions piece-meal studies of the area to identify and count species
2. Disregard what cannot be measured, or give it an arbitrary quantitative value
 - Proposed mitigation relies on experimental eco-passages whose effectiveness has no scientific evidence
3. Presume what cannot be easily measured isn't important
 - Impact of losing ½ of SMH to development is never studied
 - City has never examined its justification for TFD relative to its environmental impact
4. Deny the existence of what cannot be measured
 - TFD can be ignored when converting SMH into a NCC-owned wilderness park

“Shepherd’s Hook” Extends Greenbelt



Eco-Corridors Build Ottawa's Gatineau Park



It's Never Too Late To Do The Right Thing

