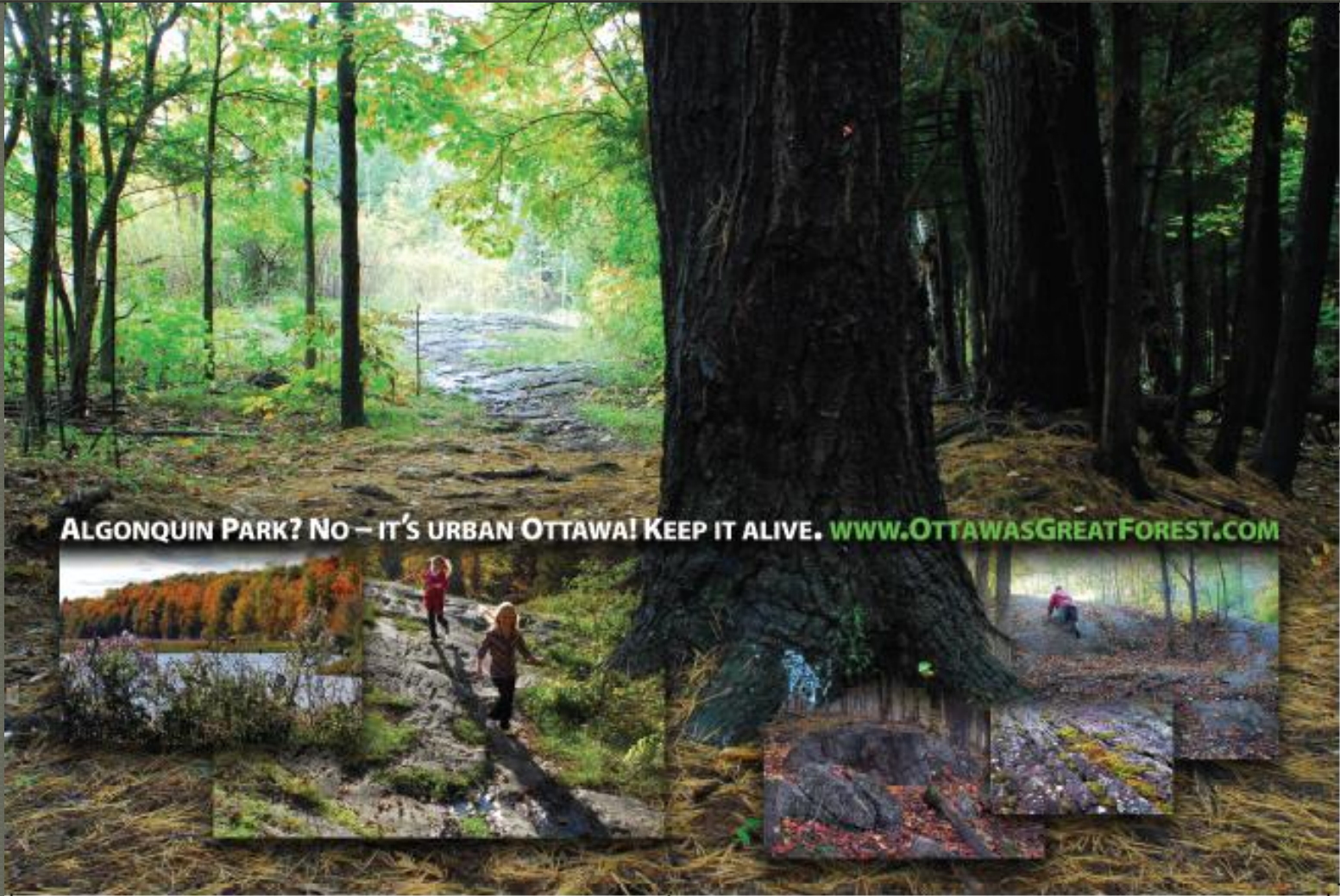
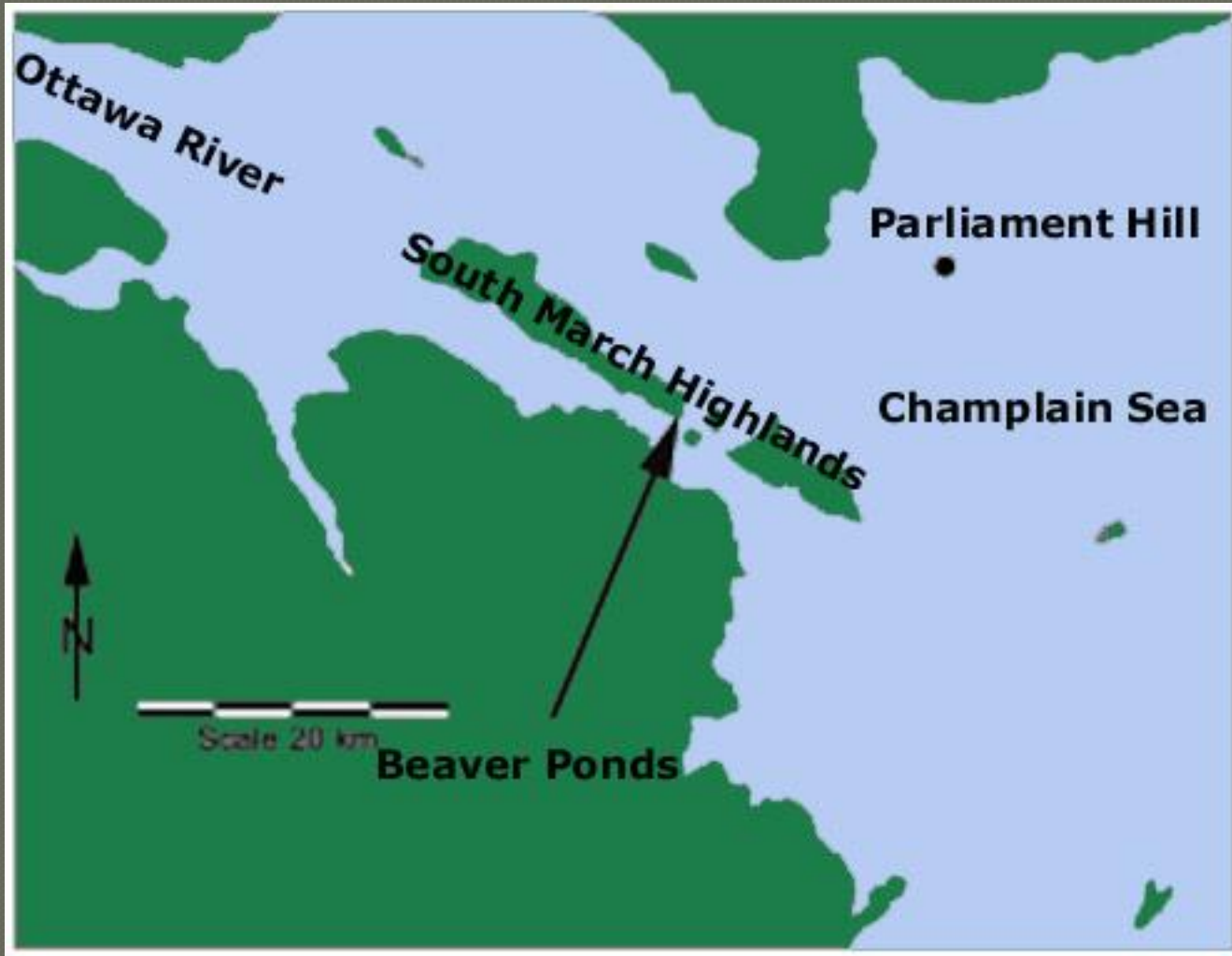


South March Highlands Critical Habitat For Anishinabe Culture



An Early Hunting Ground



10,000 years ago the SMH emerged as a Fresh Water Island in a salt-water Sea as the glaciers melted and the land rose from beneath the water

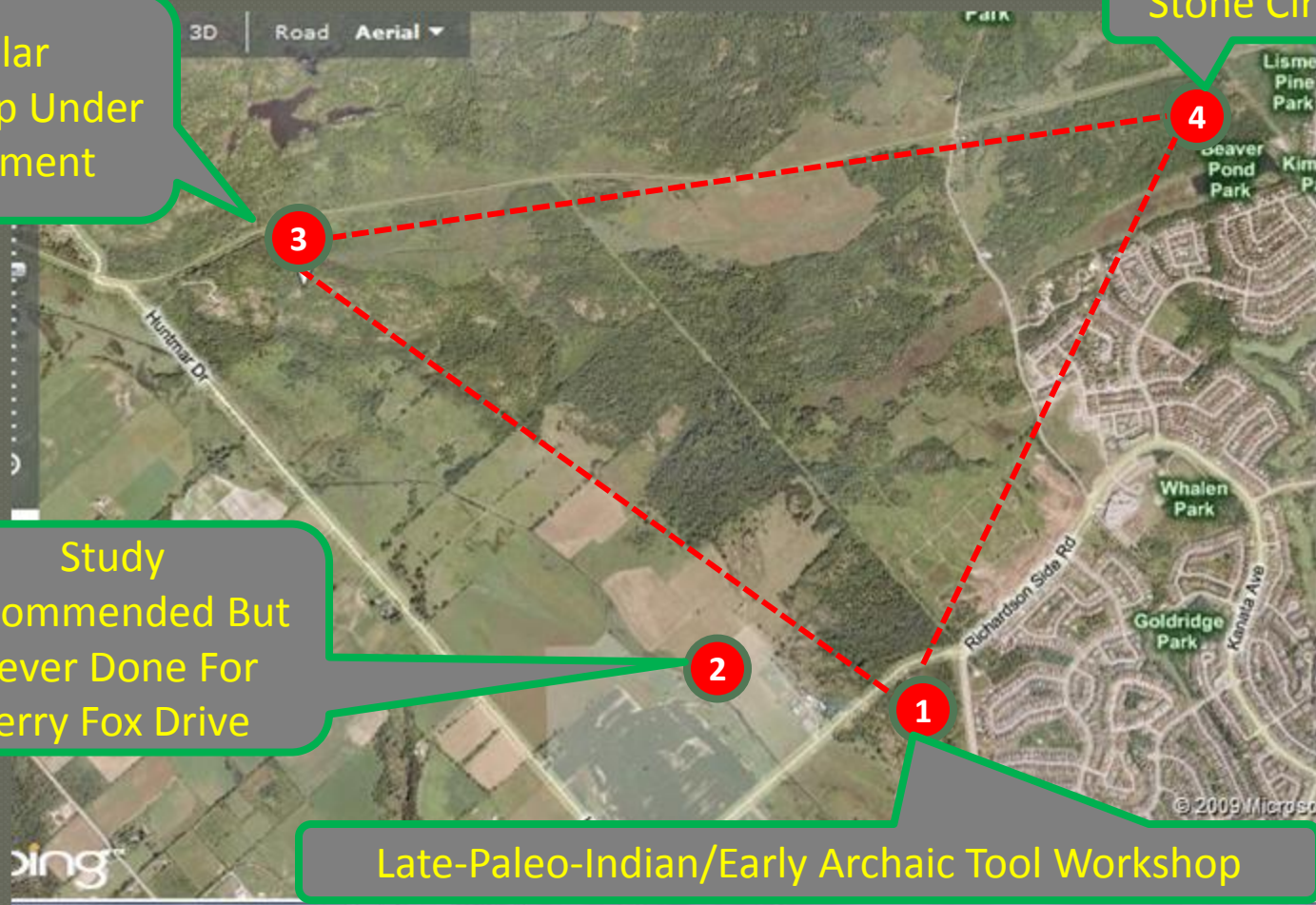
Known Archaeological Sites Within 1 km Radius In South March Highlands

Similar Workshop Under Assessment

Stone Circle

Study Recommended But Never Done For Terry Fox Drive

Late-Paleo-Indian/Early Archaic Tool Workshop



500 Generation Old - Chopping Tool



Found at Location 1 on map at an altitude correlated to 10,000 year old landform

Sharpened by hand on both sides in manner consistent with Paleo-Indian and still sharp after 8,000 - 10,000 years.

Made from Quartzite – typical of Early Archaic



500 Generation Old - Chiselled Core



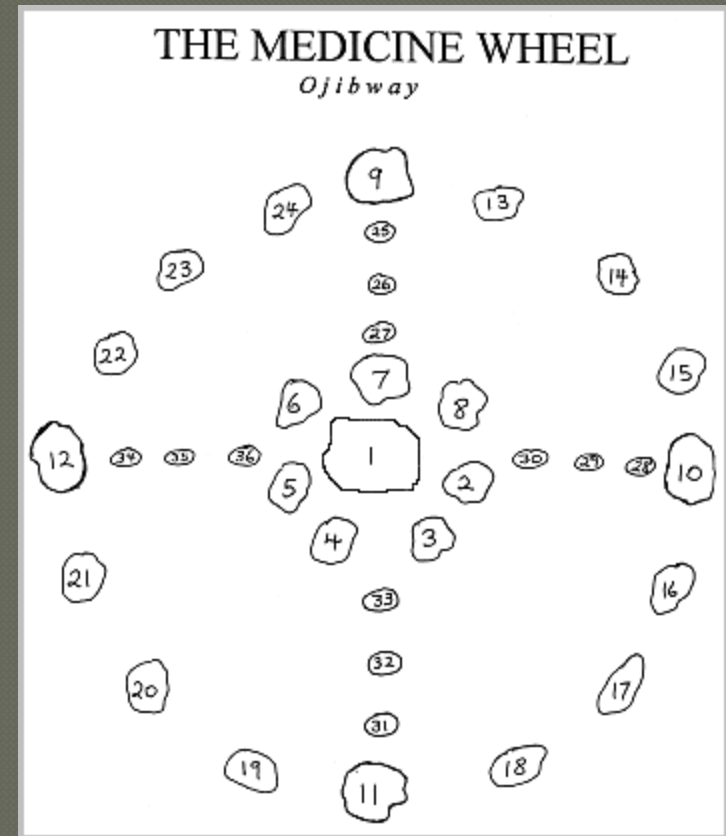
Found at Location 3 on map, also at an altitude consistent with 10,000 year old landform

Clearly fashioned by hand using quartz

Believed to be used to create smaller tools



Speculative Stone Circle



- Found at Location (4)
- The site is disturbed however the 4 major stones at the Cardinal Points (#9, 10, 11, 12) are found nearby as are the stones possibly used for the central circle
- Tobacco pouch placed for scale